

Foot Stool

HCPCS:

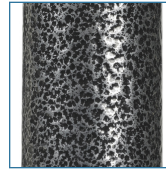


FIGURE A

- Steel-welded silver vein construction (Figure A)
- Non-skid ribbed rubber platform
- Reinforced rubber tips

PRODUCTS	Description
13030-1SV	Foot Stool,Dlx.SilverVein,1/cs
SPECIFICATIONS	Description
Warranty	Limited Lifetime
Carton Shipping Weight	7 lbs. 14 lbs.
Step Height	9"
Step Surface	14" (W) x 11" (D)
Weight	5 lbs.