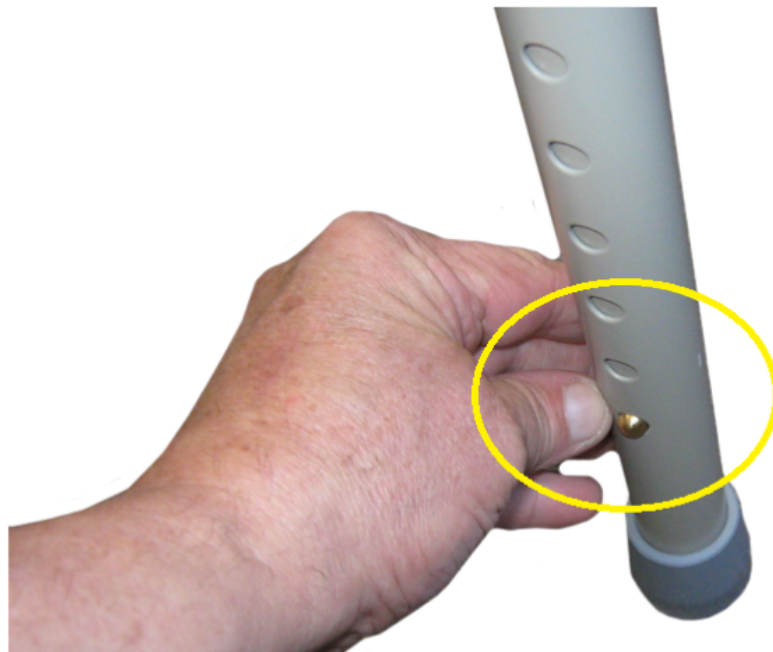


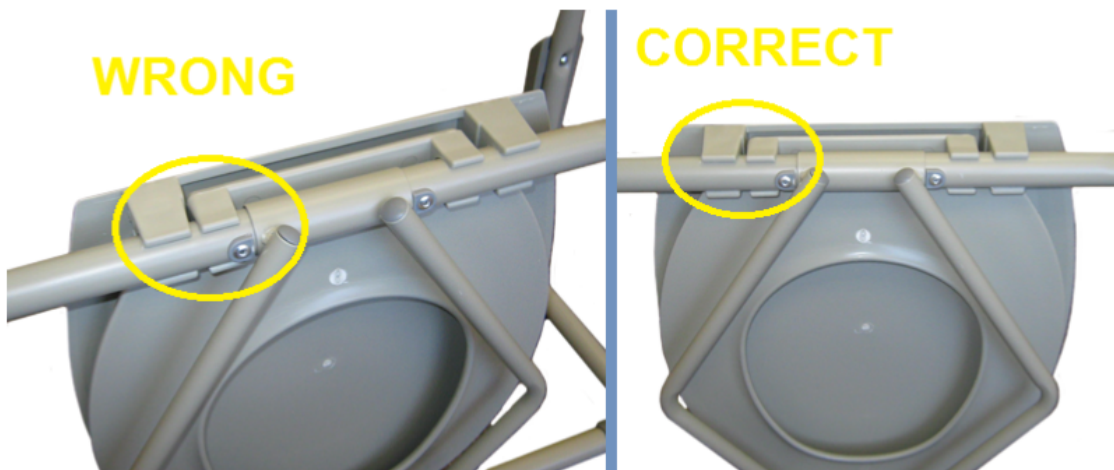
11105N

ASSEMBLY & ADJUSTMENT

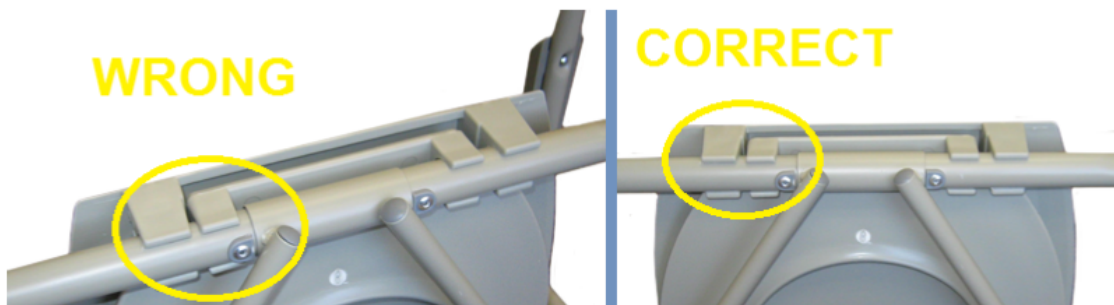
1. Adjust the leg by pushing in the locking button and turning the leg slightly. Slide the leg to the desired height and turn back until the locking button snaps into place. Repeat this process for the remaining legs.

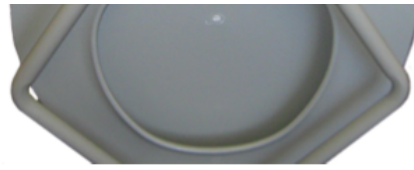


2. Snap the seat and cover onto the rear frame.

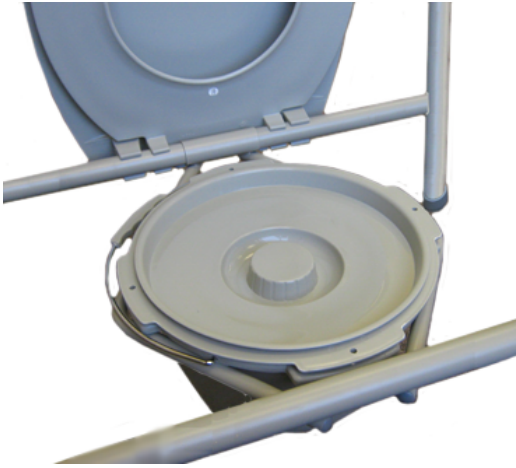


3. Make sure the seat and cover are centered on the rear frame.





4. Raise the cover and seat to place the bucket or the splash guard into bucket bracket. The splash guard is use when the commode is being used over the toilet.



[Home](#)