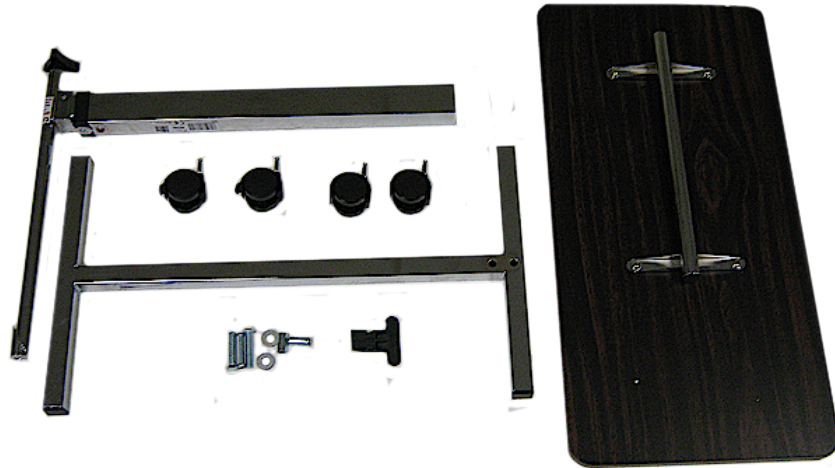
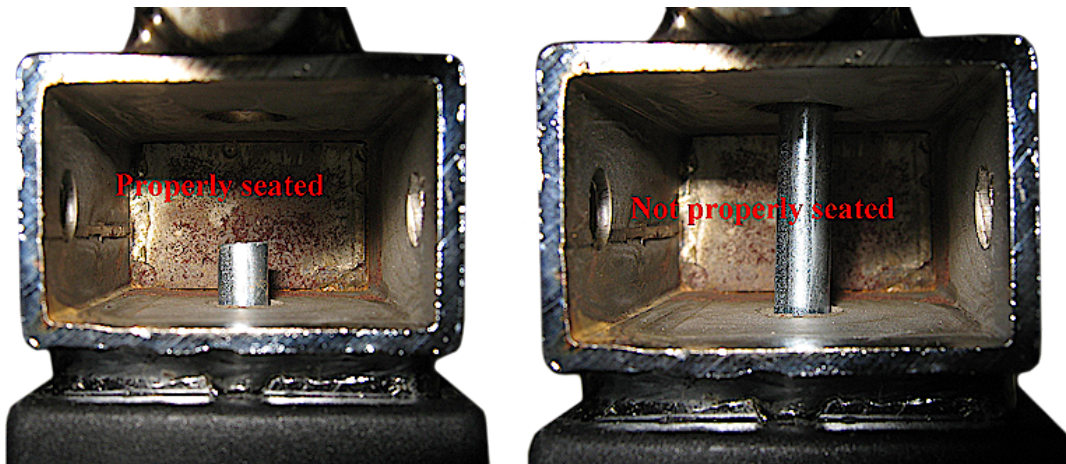


13008 ASSEMBLY

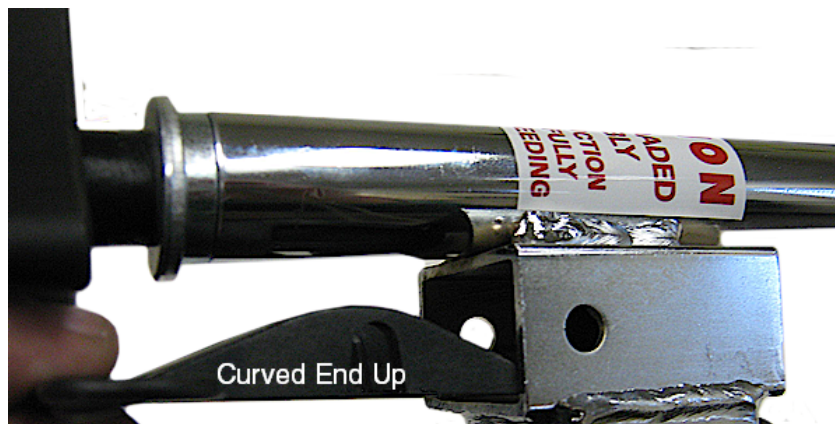
1. Open box and remove all the parts and verify all parts are present.

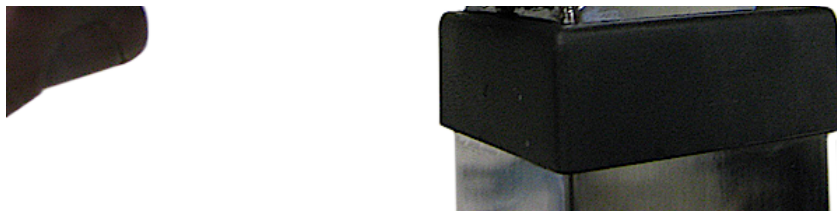


2. Make sure the trip rod in the column is fully inserted in the column. If it is not shake the column until the trip rod is properly seated.



3. Insert the trip lever with the curve part facing up..

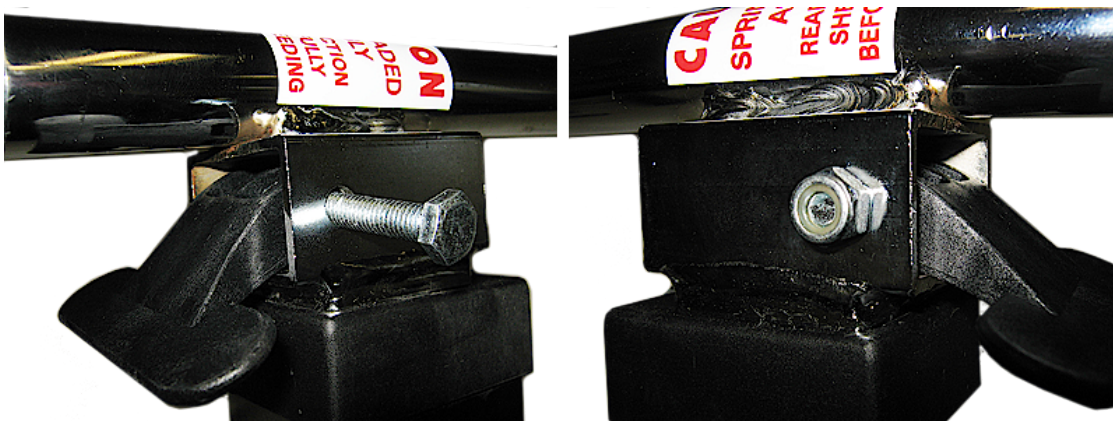




4. Make sure that the trip lever sits on top of the trip rod in the column.



5. Insert the single long bolt through the hole. Install the nut and tighten.

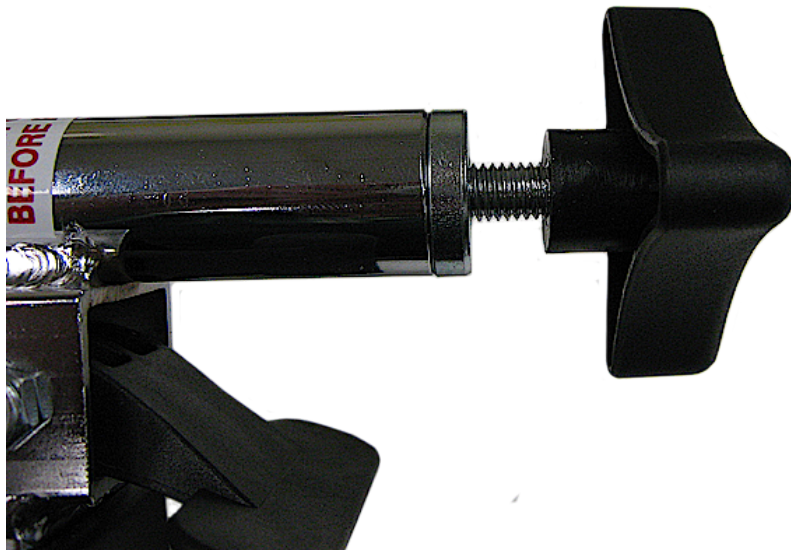


6. Loosen the tilt adjustment knob, turning counterclockwise, until it comes off the locking rod.

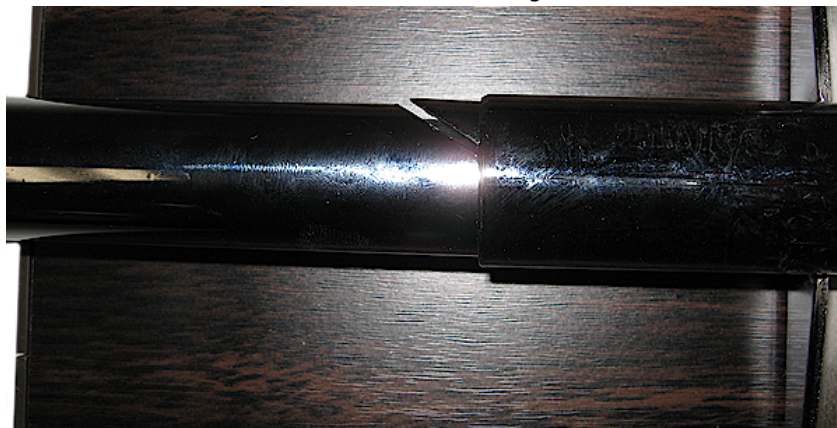




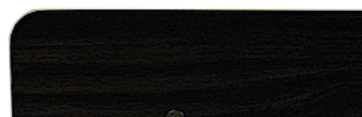
7. Place the tilt adjustment knob back on the locking rod and turn one full revolution clockwise.



8. Align the locking wedge and mast tube with the end of the table mounting bracket side that is closest to the table edge.

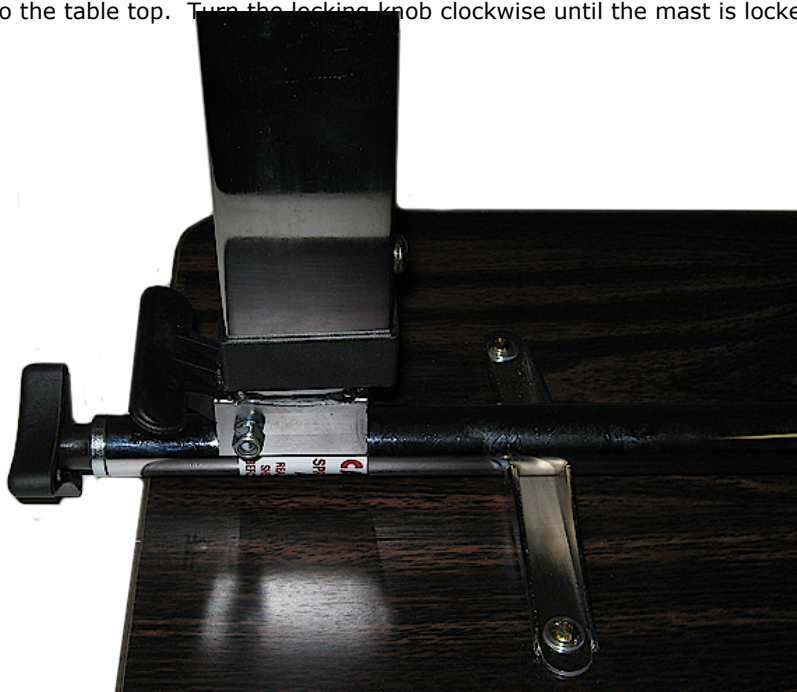


9. Slide the mast all the way into the mounting bracket.

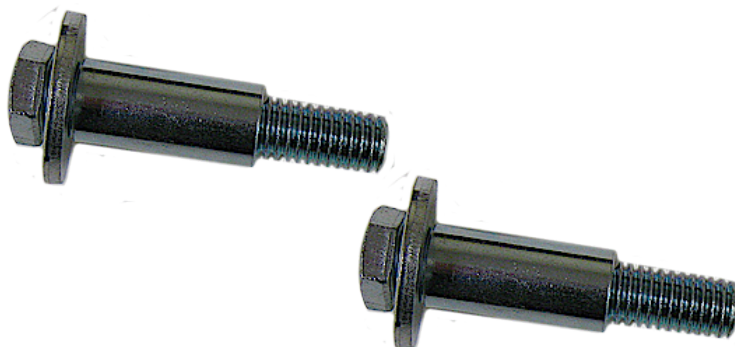




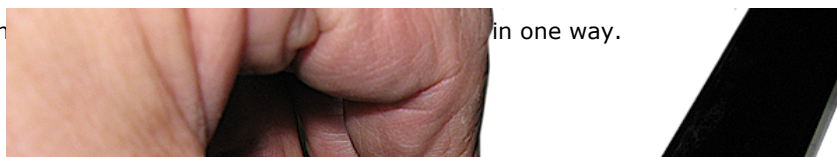
10. Set the mast perpendicular to the table top. Turn the locking knob clockwise until the mast is locked into place



11. Place each bolt through a washer and then a spacer.

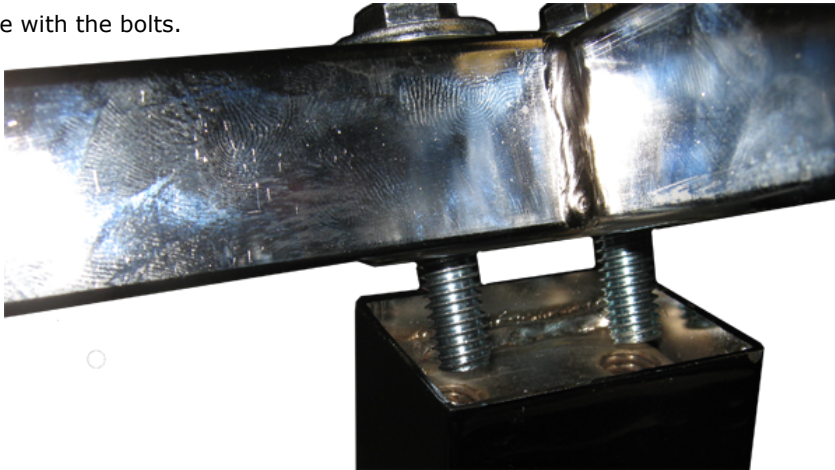


12. Put the bolt s, washers and spacers in one way.

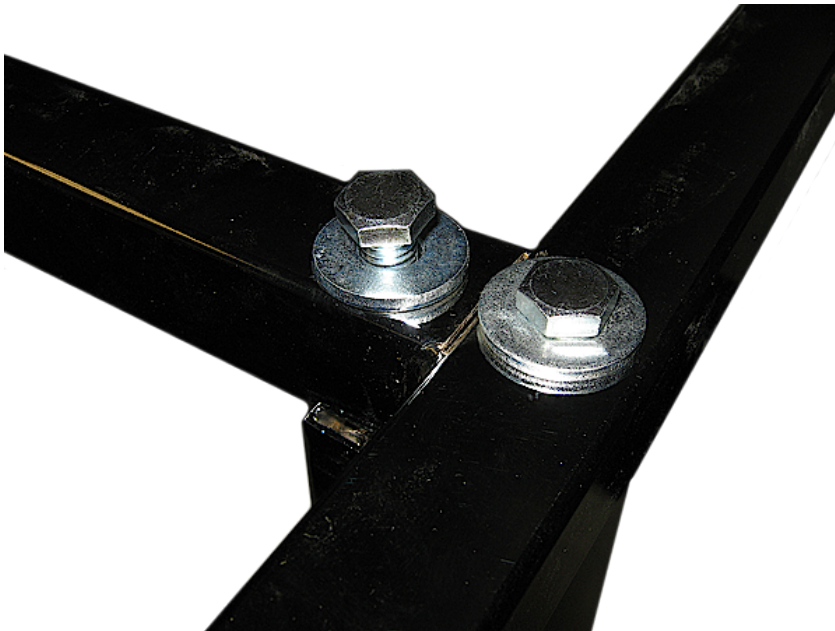




13. Align the holes in the base with the bolts.



14. Tighten both bolts.



15. Remove the silver screw.

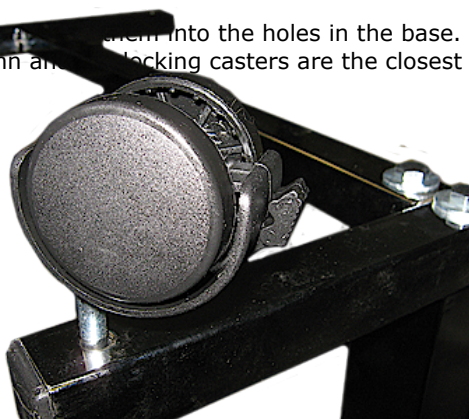




16. Install the casters into the holes in the base. Place the casters furthest from the column and the locking casters are the closest to



casters are



17. Remove the protective film



18. To lock the casters step down on the



19. To increase the height of the





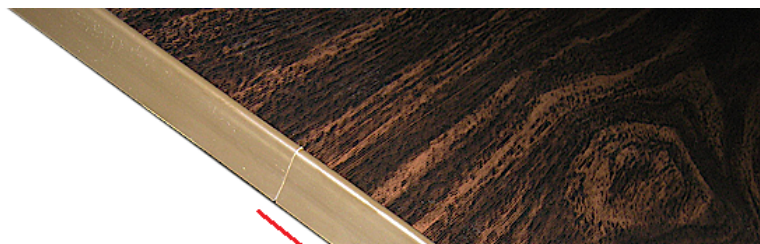
20. To lower the table, lift up on the trip



21. To adjust the tilt of the table



22. Set the desired tilt on the



place.



Home