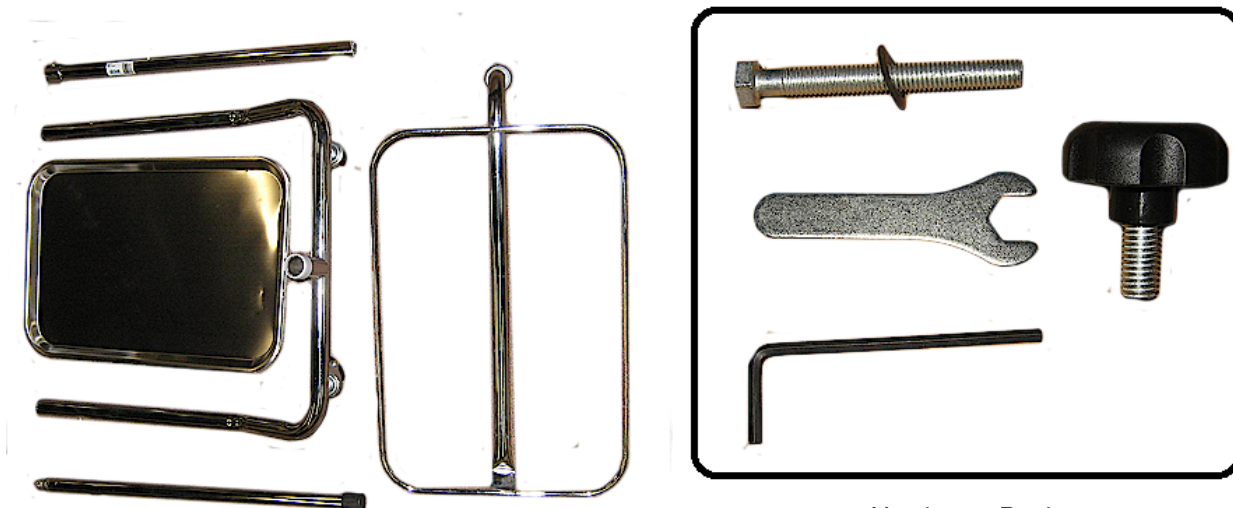


13035 ASSEMBLY

1. Verify that all the parts are in the box.



Hardware Pack

2. Find the end of the lower post that has a threaded insert.



3. Insert this end into the base of the unit with the curve of the post matching the curve of the base.





4. Insert the bolt with washer through the bottom of the base and hand tighten into the lower post.

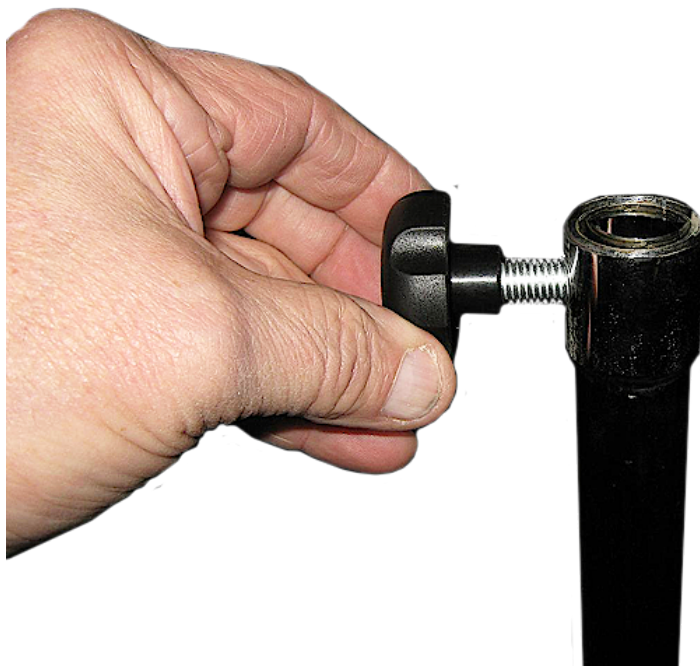


5. Tighten the bolt with the wrench provided in the hardware pack.





6. Insert height adjustment knob into the threaded hole on the top of the lower post.

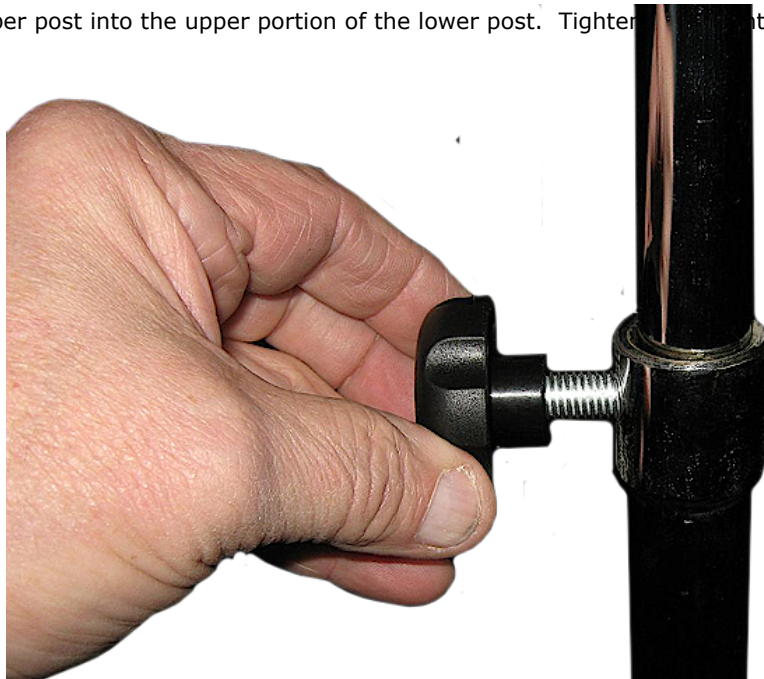


7. Remove the protective cap from the top part of the upper post.





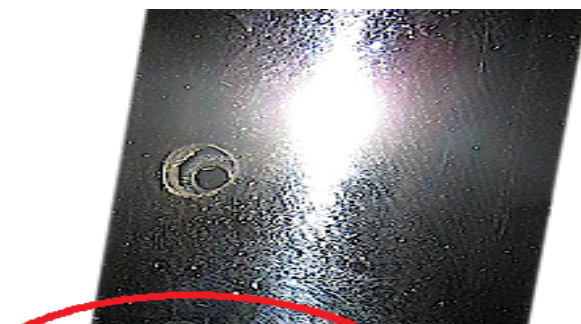
8. Insert this end of the upper post into the upper portion of the lower post. Tighten adjustment knob

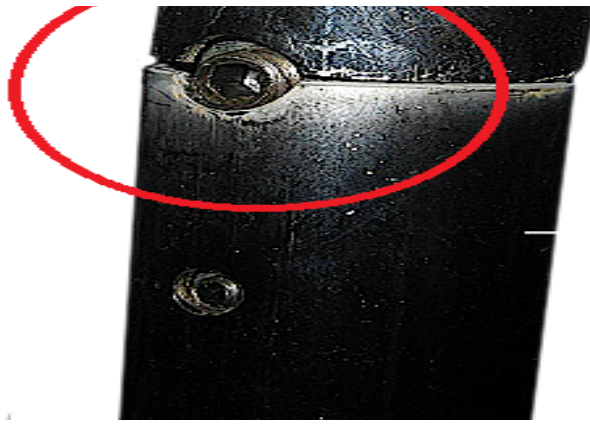


9. Remove the protective cap

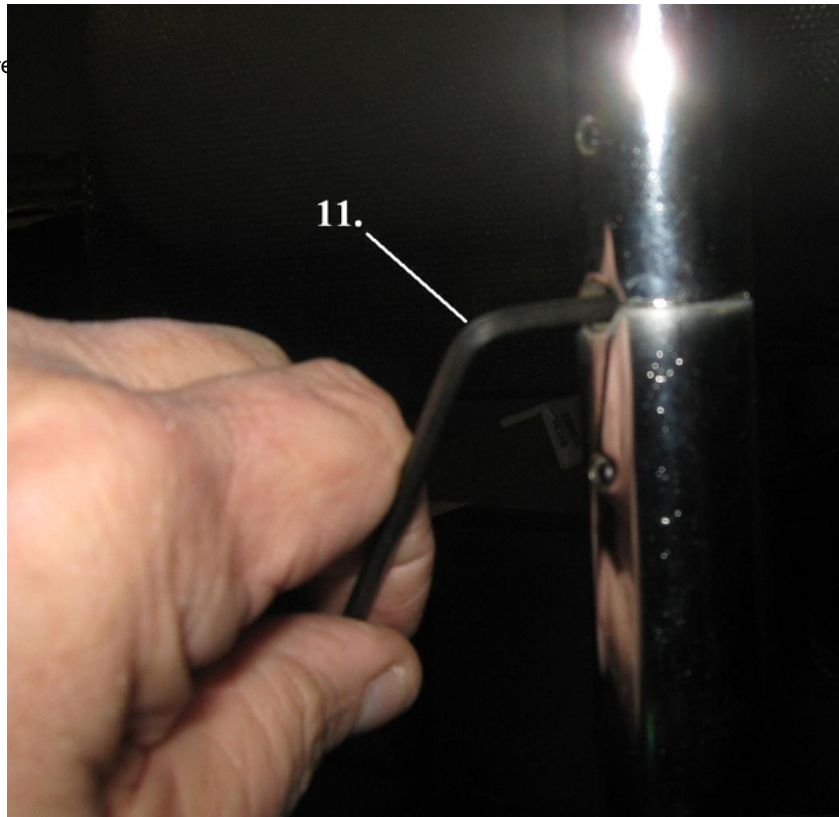


10. Put the tray bracket onto





11. Tighten the Allen set screw



Home