

If it is needed to change the swing away joystick from right side to left side the below procedure will accomplish this.



Right



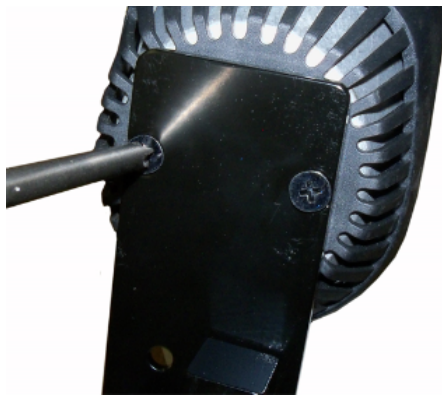
Left

1. Remove the retaining screw at the end of the mounting arm and remove the swing away joystick mount.

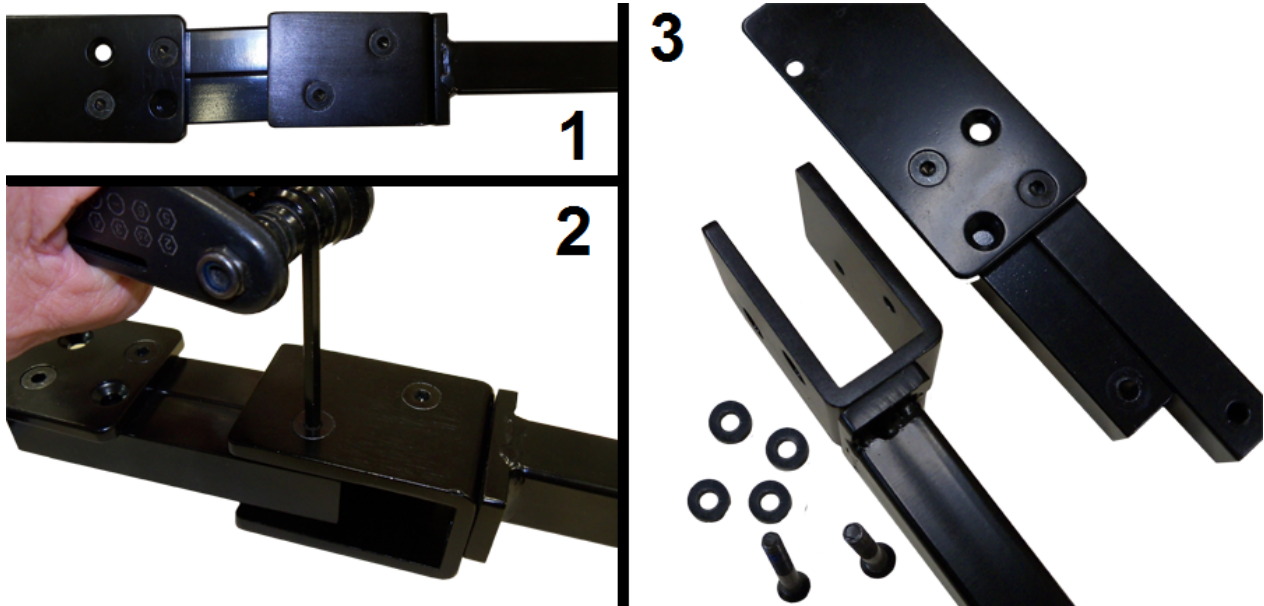


2. Remove the joystick from the mount.





3. Remove the swing away section or the mount from the stationary section of the mount.



4. Remove the "U" mount from the arm.



5. Turn the "U" bracket around 180 degrees and mount it to the arm.





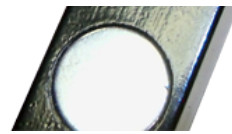
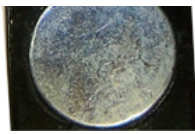
6. Remove the swing away tube closes to the rear of the joystick mounting bracket. Take note of how the washers came off.



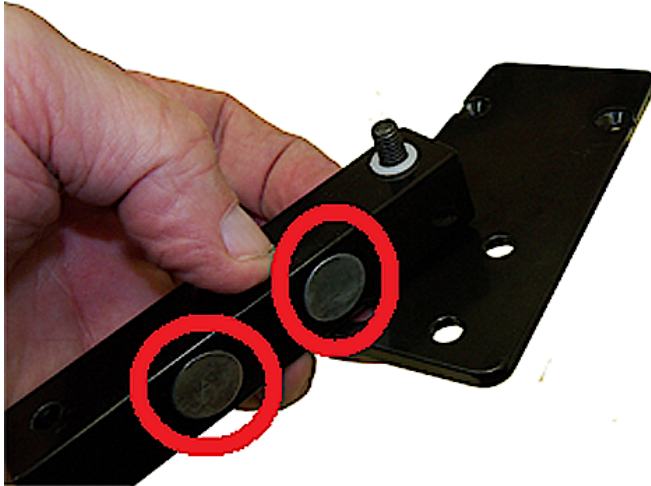
7. Remove the other swing away tube, taking note of how the washers came off.



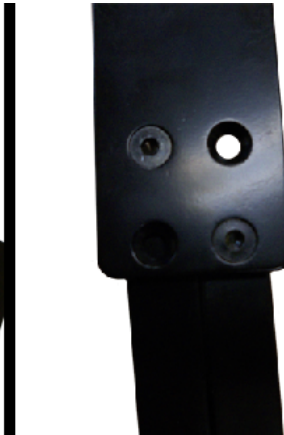
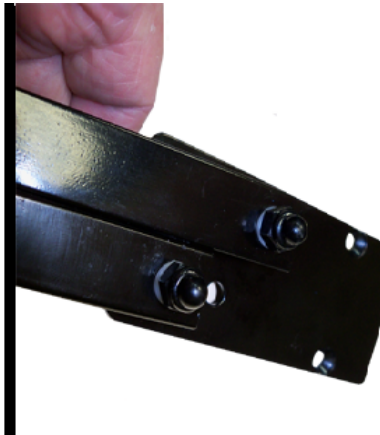




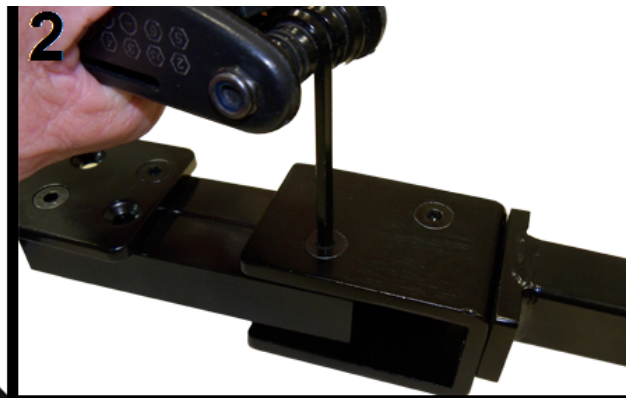
8. Move the bolt from the swing away tube to the other side of the joystick mount. Install the swing away tube onto this bolt with its' washers. Make sure the magnetic plates face inward.



9. Install the remaining swing away tube on the hole on the opposite side, closes to the end of the bracket.



10. Mount the swing away part of the mount into the "U" bracket of the stationary part of the swing away joystick mount.



11. Mount the joystick onto the swing away joystick mount.



12. Move the joystick mounting bracket to the other side. Slide the swing away joystick assembly into the mounting bracket and install the retaining screw.



[Home](#)