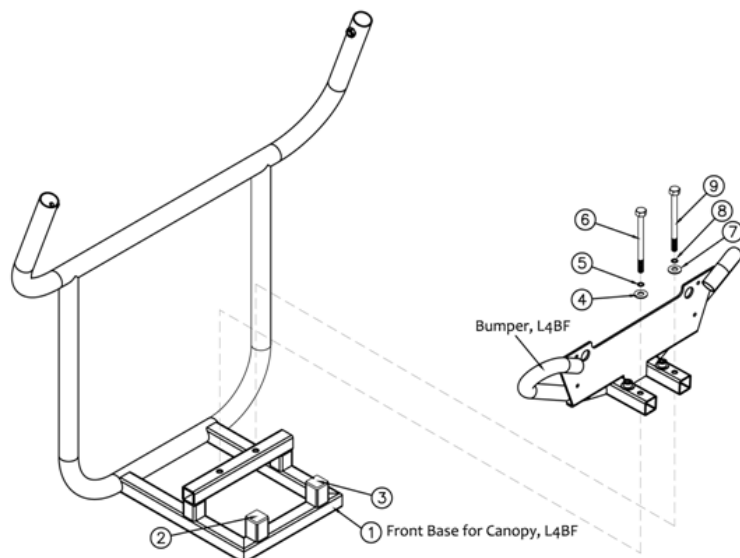


AT2000

HARD TOP CANOPY, KING COBRA

INSTALLATION

1. Front Base Installation



Installation Guideline:

1.Order:

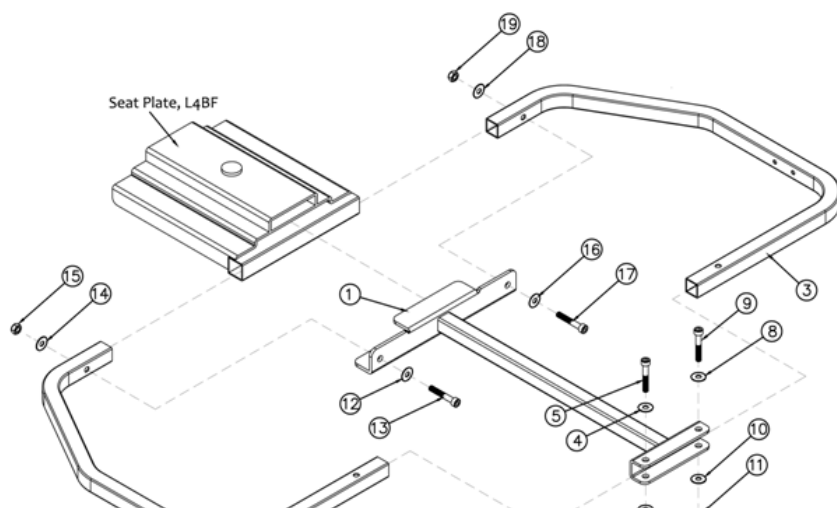
① → ② → ③ → ④ → ⑤ → ⑥ → ⑦ → ⑧ → ⑨

2.Please Note:

(1) To install the front base for canopy (L4B), please make sure that #6 and #9 bolts are locked properly.

2	⑥ ⑨	Bolt, M8*P1.25*90L	9036080901251
2	⑤ ⑧	Spring Washer	9211080200142
2	④ ⑦	Washer	9214080150232
2	② ③	1"x1" Plug 1.25"x90L	C26-001-00500
1	①	Front Base for Canopy	C37-062-026XX

2. Rear Bracket Installation



Installation Guideline:

1.Order:

① → ② → ③ → ④ → ⑤ → ⑥ → ⑦ → ⑧ → ⑨ → ⑩ → ⑪ → ⑫ → ⑬ → ⑭ → ⑮ → ⑯ → ⑰ → ⑱

2.Please Note:

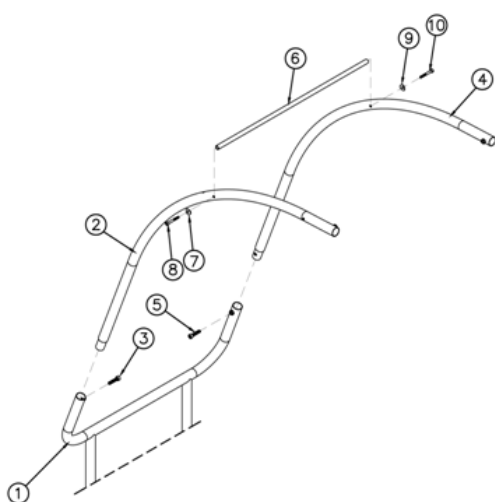
(1) Before installing the rear bracket for canopy (L4BF), please remove the plug of the seat plate.
 (2) To install the rear bracket for canopy (L4B), please pre-lock #5, 9, 13, and 17 bolts with #7, 11, 15, and 19 lock nuts for 2~3 threads.



After adjusting, please lock them properly.

4	15 7	19 11	Lock Nut	9201080801252
4	13 5	17 9	Bolt-M8*P1.25*50L	9035080501251
4	16 12 8 4	18 14 10 6	Washer	9214080300232
2	2	3	Rear Bracket for Canopy	C37-062-024XX
1	1		Connecting Bar for Rear Bracket(L48F Canopy)	C37-062-025XX

3. Front Pole Installation



Installation Guideline:

1.Order:

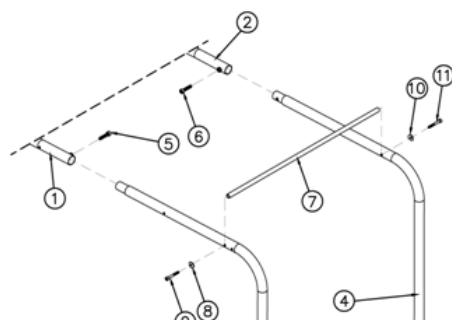
①→②→③→④→⑤→⑥
⑦→⑧→⑨→⑩

2.Please Note:

(1)To install the front pole for the canopy, please pre-lock #3 and #5 bolts for 10~15 threads.
(2)To install #6 crossbar, please make sure that 8 and 10 bolts are locked properly. Then, make sure that #3 and #5 bolts are locked properly.

2	8 7	10 9	Bolt, M6x1.0x45L	9035060451001
2			Washer	9250060100193
1	6		Crossbar	C37-062-022XX
1	4		Front Pole for Canopy, (R)	C37-062-019XX
2	3 2	5	Bolt-M8x35L	9021080351251
1			Front Pole for Canopy, (L)	C37-062-018XX
1	1		Front Pole for Canopy (L48/XL3)	

4. Rear Pole Installation



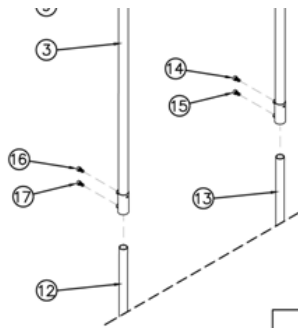
Installation Guideline:

1.Order:

①→②→③→④→⑤→⑥
⑦→⑧→⑨→⑩→⑪→⑫
⑬→⑭→⑮→⑯→⑰

2.Please Note:

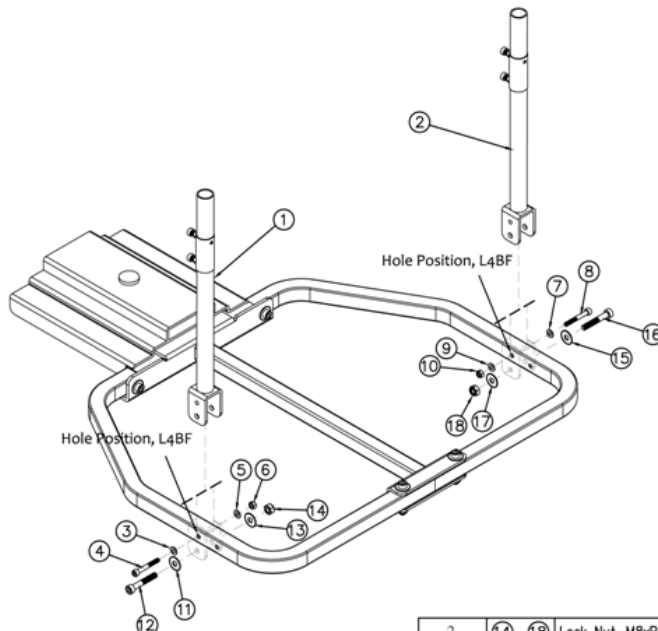
(1)To install the rear pole for the canopy, please pre-lock #5 and #6 bolts for 10~15 threads



(2)To install 7 crossbar, please make sure that #9 and #11 bolts are locked properly. Then, make sure that #5 and #6 bolts are locked properly.
(3)Please insert #12 and #13 retractable bars into #3 and #4 rear poles and pre-lock #14, 15, 16, and 17 bolts for 3~5 threads.

4	⑭~⑰	Bolt, M8X1.25X15L	9021080151251
2	⑫ ⑬	Retractable Bar	C37-062-023XX
2	⑨ ⑪	Bolt, M6x1.0x45L	9035060451001
2	⑧ ⑩	Washer	9250060100193
1	⑦	Retractable Bar	C37-062-022XX
2	⑤ ⑥	Bolt, M8x35L	9021080351251
1	④	Rear Pole for Canopy (R)	C37-062-021XX
1	③	Rear Pole for Canopy (L)	C37-062-020XX
1	②	Front Pole for Canopy (R)	C37-062-019XX
1	①	Front Pole for Canopy (L)	C37-062-018XX

5. Retractable Bar Installation



Installation Guideline:

1.Order:

①→②→③→④→⑤→⑥
⑦→⑧→⑨→⑩→⑪→⑫
⑬→⑭→⑮→⑯→⑰→⑱

2.Please Note:

(1)To install #1 and #2 retractable bars, firstly insert #4 and #8 bolts through the hole positions on L4BF, and lock them properly with #6 and #10 lock nuts.
(2)Lock #12 and #16 bolts properly and make sure that they are locked with #14 and #18 lock nuts.
(3)Please adjust #1 and #2 retractable bars to proper positions and make sure that the #14~17 bolts on page 4 are screwed firmly.

2	⑭ ⑱	Lock Nut-M8xP1.25	9201080801252
2	⑫ ⑯	Bolt-M8*P1.25*50L	9035080501251
4	⑮ ⑰	Washer	9214080300232
2	⑥ ⑩	Lock Nut-M6*P1.0	9201060601002
2	④ ⑧	Bolt, M6x1.0x45L	9035060451001
4	⑦ ⑨	Washer	9214060100132
2	① ②	Retractable Bar	C37-062-023XX

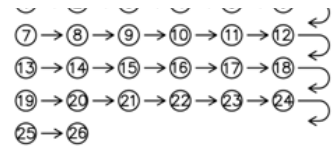
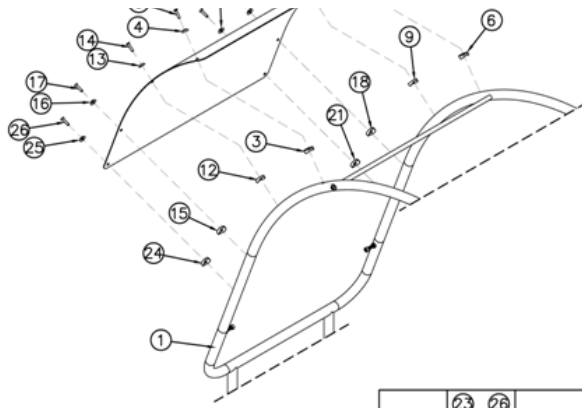
6. Wind Shield Installation



Installation Guideline:

1.Order:

①→②→③→④→⑤→⑥

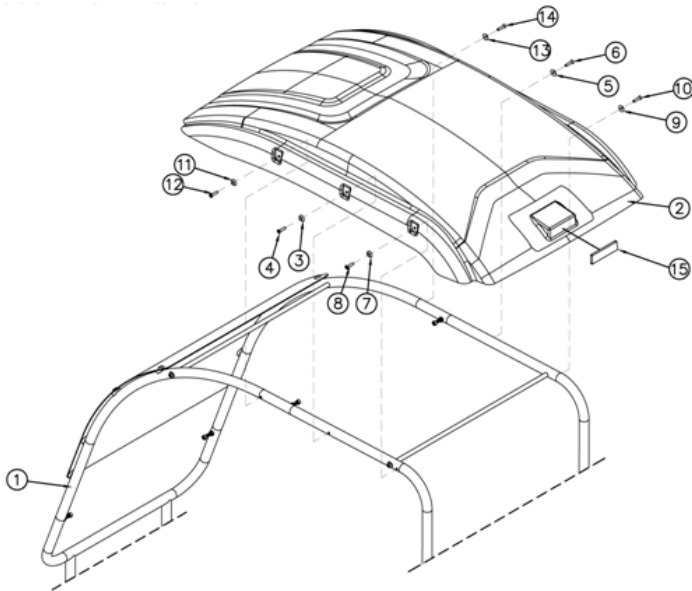


2.Please Note:

(1))To install the wind shield for canopy, pre-screw #5, 8, 11, 14, 17, 20, 23, and 26 bolts according to the above order, adjust the shield to match the parallel position of the front poles, and lock them properly.

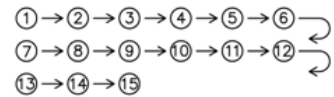
8	23 26 17 20 11 14 5 8	Bolt, M6X1.0X25L	9010060251003
8	22 25 16 19 10 13 4 7	Washer	9906060000000
8	21 24 15 18 9 12 3 6	Washer	C26-062-006XX
1	2	Wind Shield for Canopy	C37-062-028XX
1	1	Front Base for Canopy	

7. Headlining



Installation Guideline:

1.Order:



2.Please Note:

(1)To install the headlining for canopy, pre-screw #4, 6, 8, 10, 12, and 14 bolts according to the above order, adjust the headlining to the matching position, and lock them properly.

1	15	Reflector(Red)	C24-029-001XX
6	12 14 8 10 4 6	Bolt, M6X1.0X25L	9010060251003
6	11 13 7 9 3 5	Washer	9906060000000
1	2	Headlining for Canopy	C37-062-027XX
1	1	Bracket for Canopy	