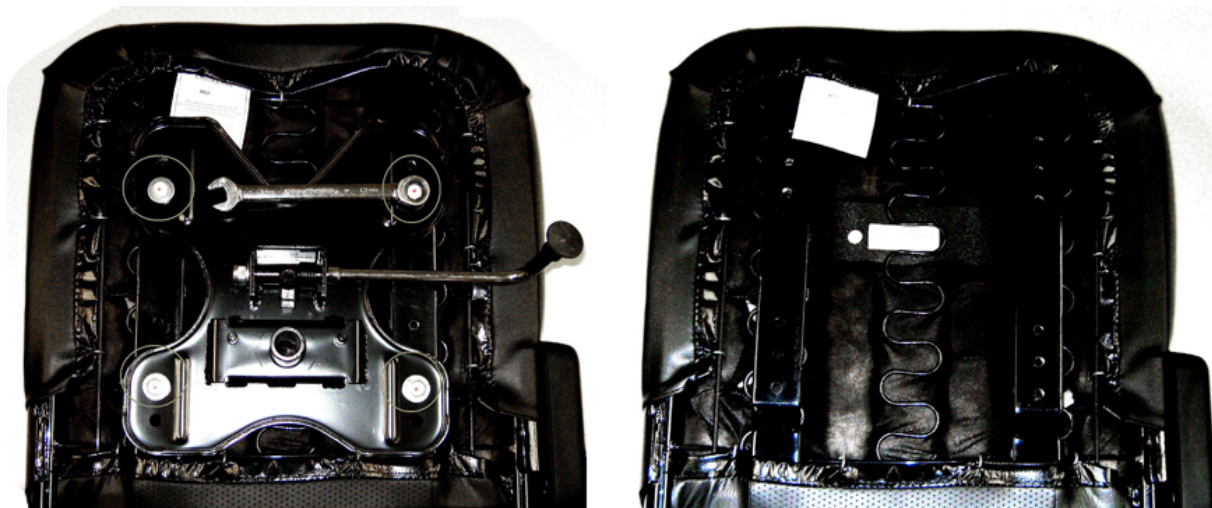
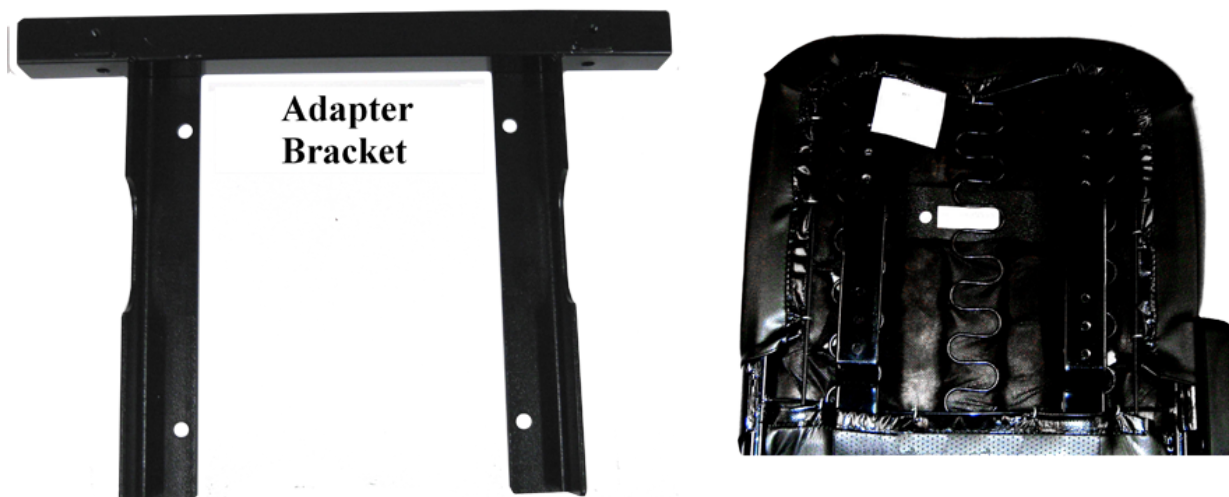


ECELR-P, SFELR & LK3JELR INSTALLATION

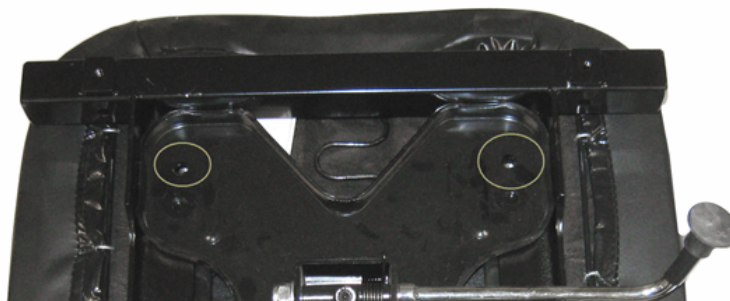
1. Using a 13mm wrench or socket remove the seat plate from the seat.

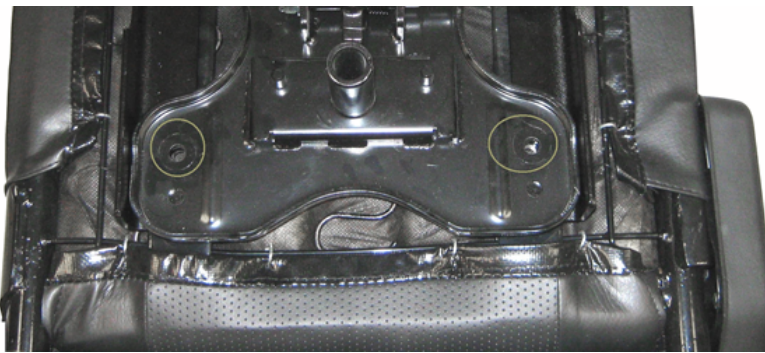


2. Place the adapter bracket (ECELR-P) on the seat with the L part of the adapter bracket facing away from the seat.

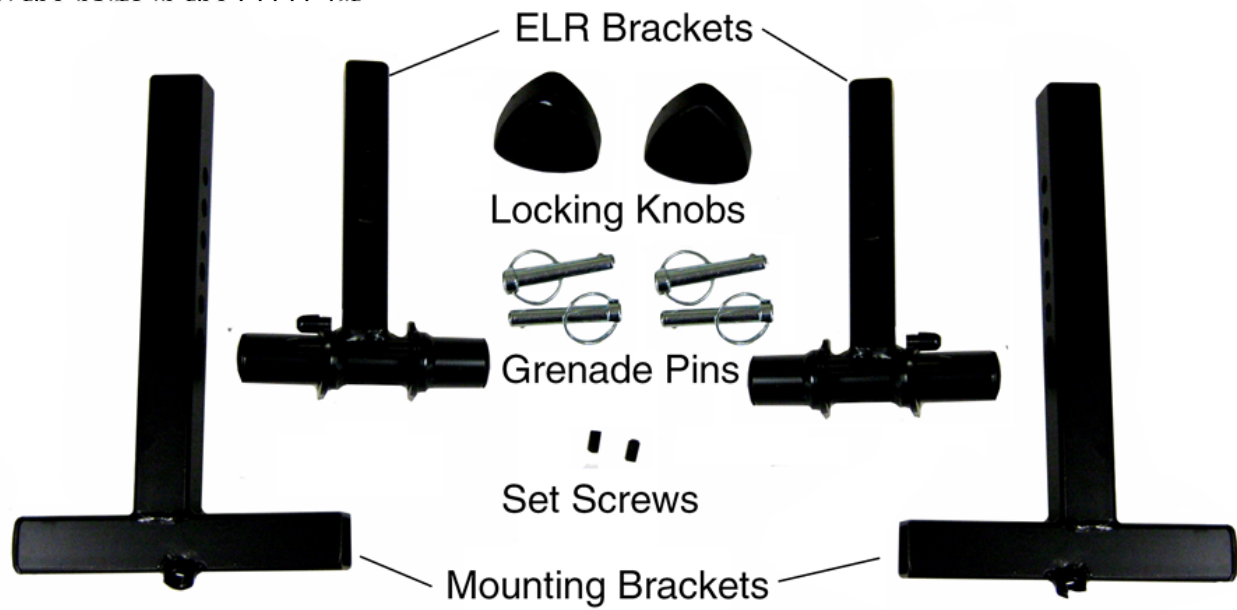


3. Place the seat plate on top of the adapter bracket. Align the holes in the seat bracket, the adapter bracket and the seat. Install the four bolts that were removed in step 1 using a 13mm wrench or socket.





4. Identify the parts in the GFFLE kit

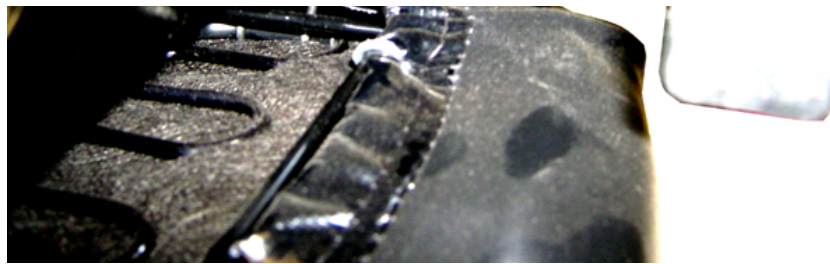


5. Slide the mounting bracket into the seat frame and push it down towards the floor.

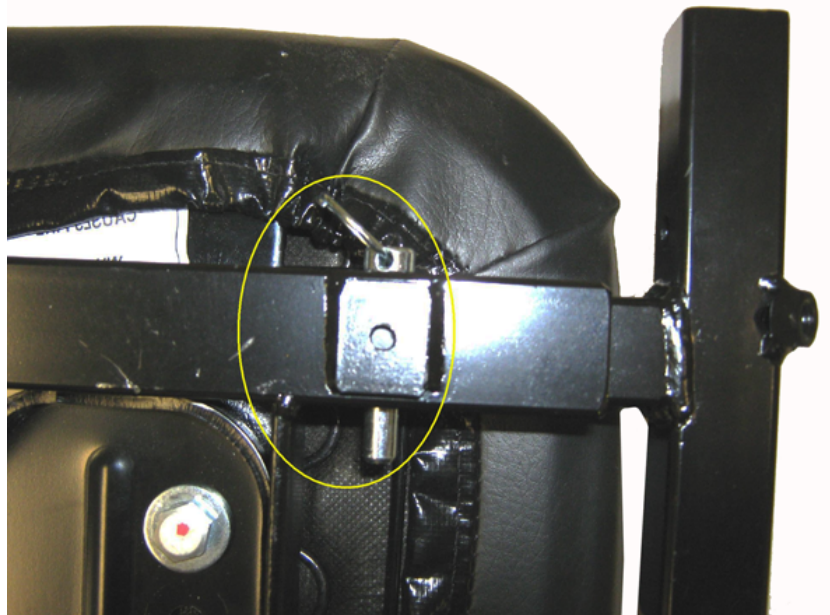


6. Align one of the holes in the bracket with the hole in the seat frame.





7. Insert one of the grenade pins through the adapter bracket and mounting bracket

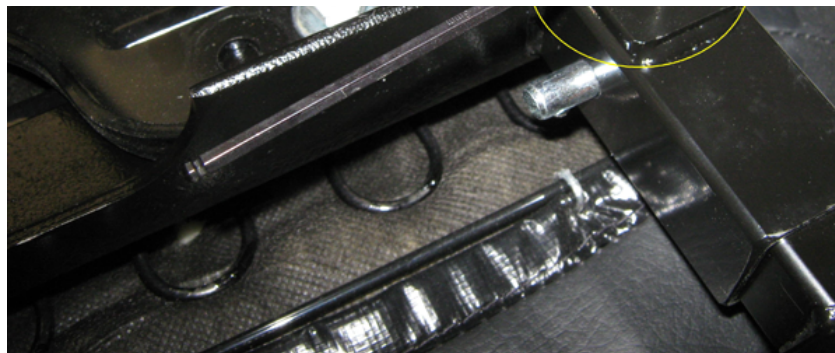


8. Insert one of the Allen head set screws into the adapter bracket



9. Using a 3mm Allen wrench, tighten the set screw





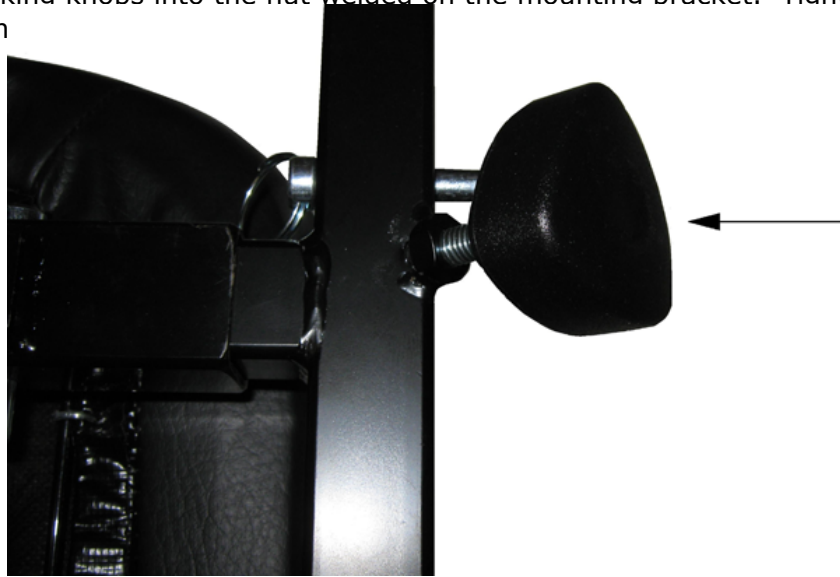
10. Slide the ELR bracket into the mounting bracket. The mounting pins on the ELR bracket have to be on the out side of the seat and



11. Align the hole in the mounting bracket with one of the holes in the ELR bracket. Insert one of the grenade pins.



12. Install one of the locking knobs into the nut welded on the mounting bracket. Tighten the knob until the ELR bracket is locked in



13. Install



The width between the ELRs can be adjusted by loosening the Allen set screws and removing the grenade

[Home](#)