

NITRO ELITE BRAKE CABLE REPLACEMENT

Method #1 - If the Nitro Elite cable housing is intact and only the cable needs to be replaced.

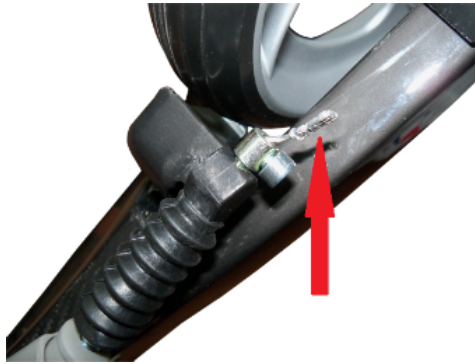
Method #2 - If the Nitro Elite cable housing also needs replaced.

Method #3 - If the cable and cable housing has been taken out of the Nitro Elite (*this is very difficult to do*).

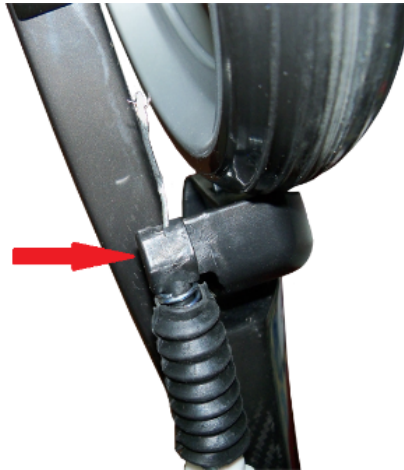
Brake Adjustment

Method #1

1. Remove the cable crimp from the end of the cable by the brake.



2. Loosen up the cable fastener with a 4mm Allen wrench and remove cable fastener from cable.



3. Remove spring and spring boot from cable.



4. Remove the brake handle retaining screw and plate on the inside of the handle with a 2.5mm Allen wrench.



5. Pull the handle about 2 to 3 inches away from the handle. Remove the 2 silver bushings from either side of the brake handle.



Handgrip was only removed to better see brake handle parts.

6. Pull out the plastic axle, which the bushings were, on out of the handle.

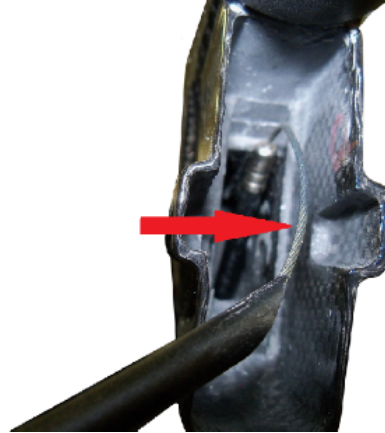


7. Pull the brake handle away from the housing being careful not to lose the small plastic cable pulley.

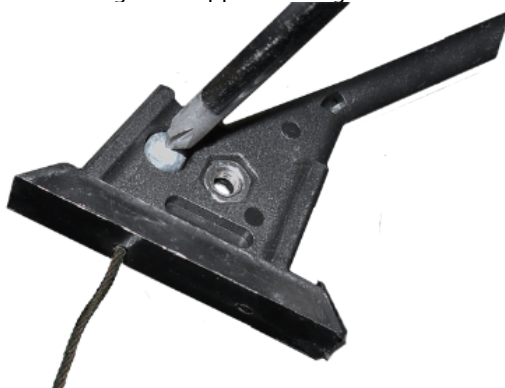




8. Pull the cable, not the



9. Push the end of the cable through the upper cable guide and remove the cable from the upper cable guide.

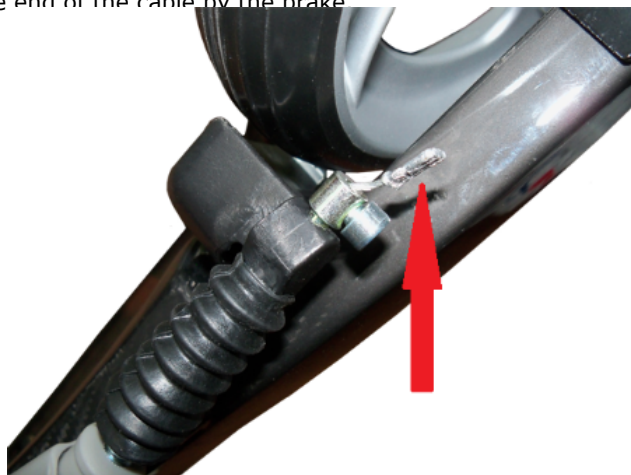


10. Install in reverse order.

11. Follow brake adjustment instructions

Method #2

1. Remove the cable crimp from the end of the cable by the brake



2. Loosen up the cable fastener with a 4mm Allen wrench and remove cable fastener from cable.



3. Remove spring and spring boot from

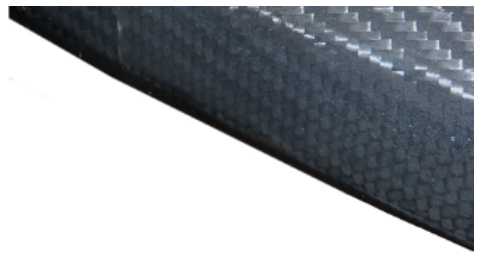


4. Pull cable through cable adjuster.



5. Pry off





6. Tape one end of a 4 foot cord to the end of the cable. This will prevent the cord from being pulled off. Tie off here. her end of the cord to the cable adjuster.



7. Remove the brake handle.



8. Pull the handle about 2 to 3 inches and hold it.



from either side of the brake handle.

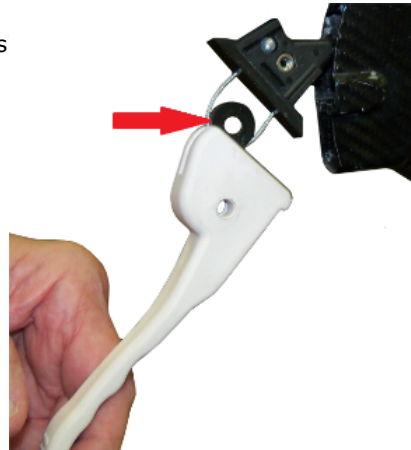
Handgrip was only removed to better see brake handle parts.

9. Pull out the plastic axle, which the bushing



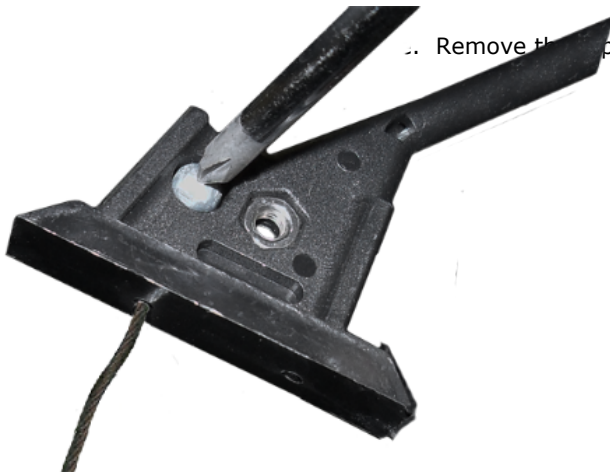
10. Pull the brake handle away from the hous

all plastic cable pulley.



11. Pull the cab

Remove the rope



12. Push the e
housing.

guide and remove

d cable

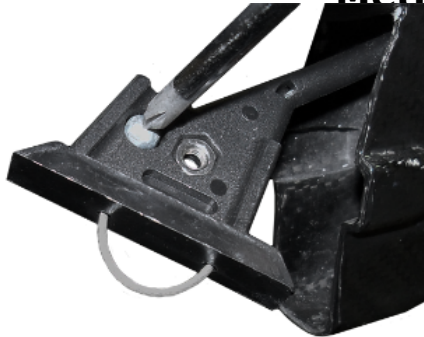




10. Install in reverse order.
11. Follow brake adjustment instructions

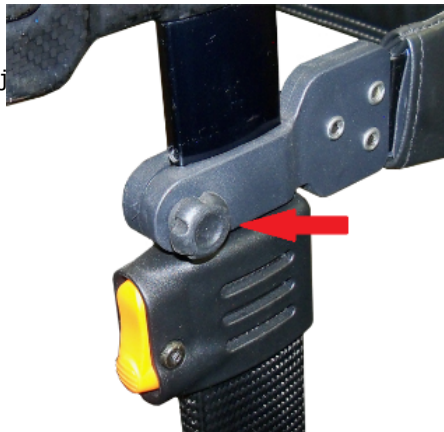
Method #3

1. Push the end of the housing.

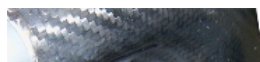


side and cable

2. Remove the backrest adj



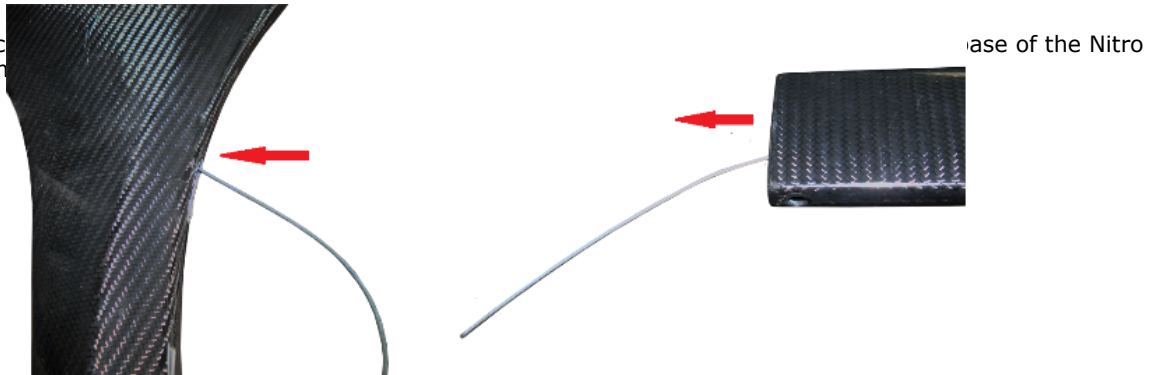
3. Using two 4mm Allen wrench remov



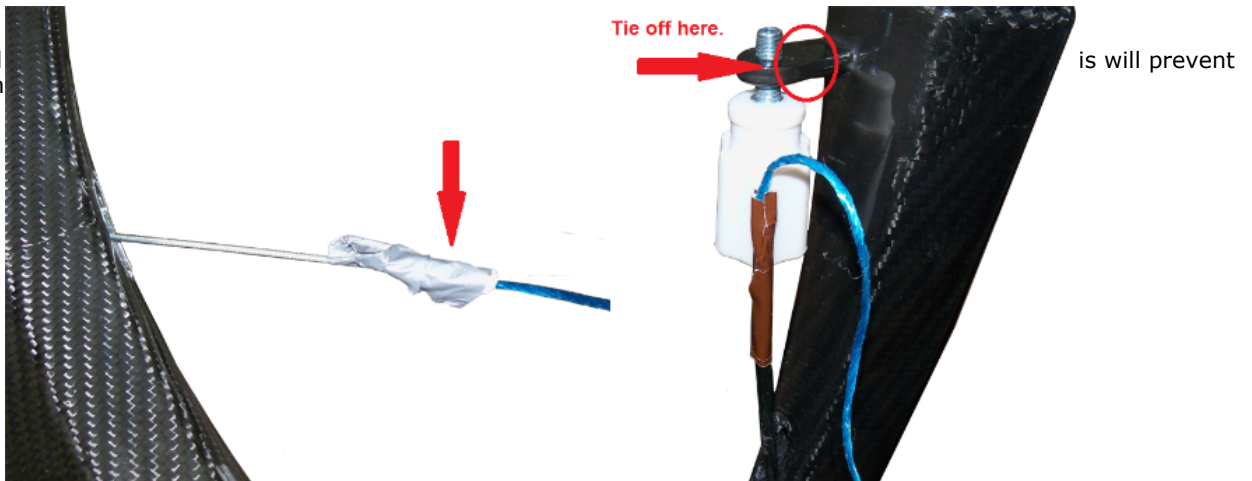
4. Slide the handle all the way down to the unit.



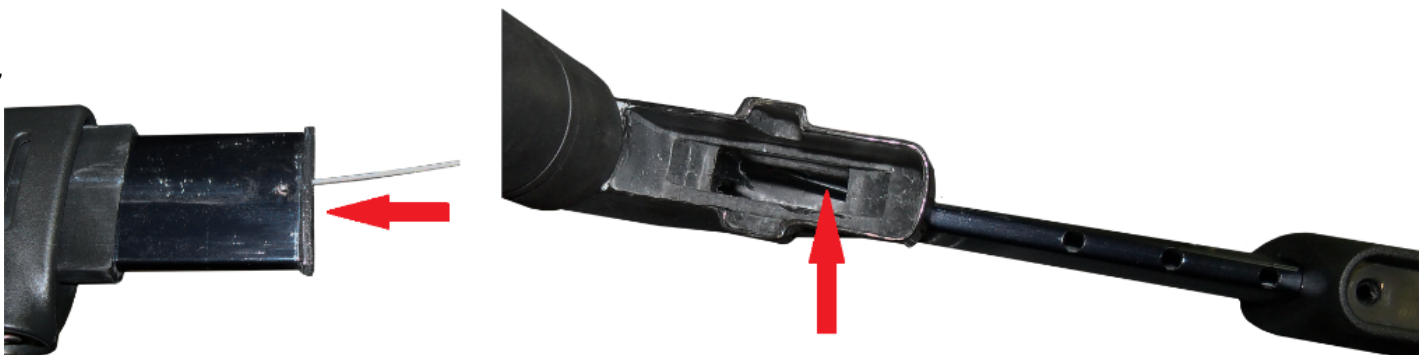
5. Remove the replacement Elite. Push it up until it is flush with the base of the Nitro



6. Tape one end of the cord from the handle to the unit.



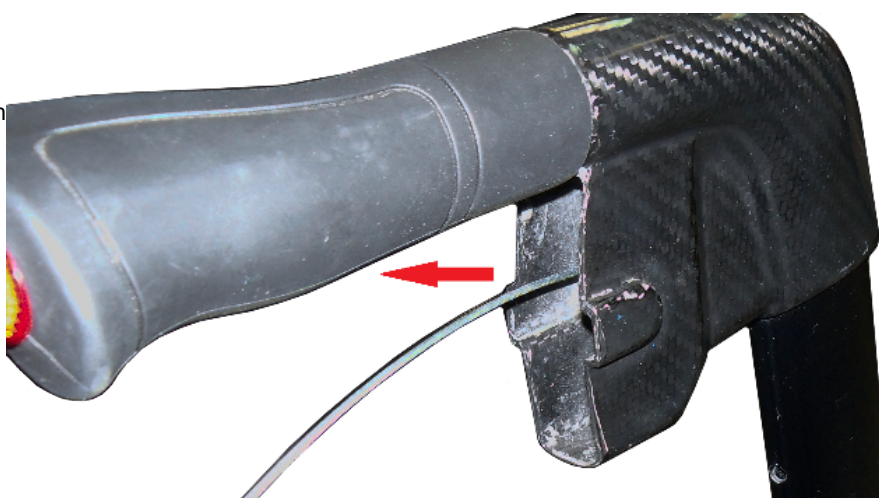
7



8. Cut a piece of cardboard and slide it into the opening of the handle to push the cable out from the handle bar.



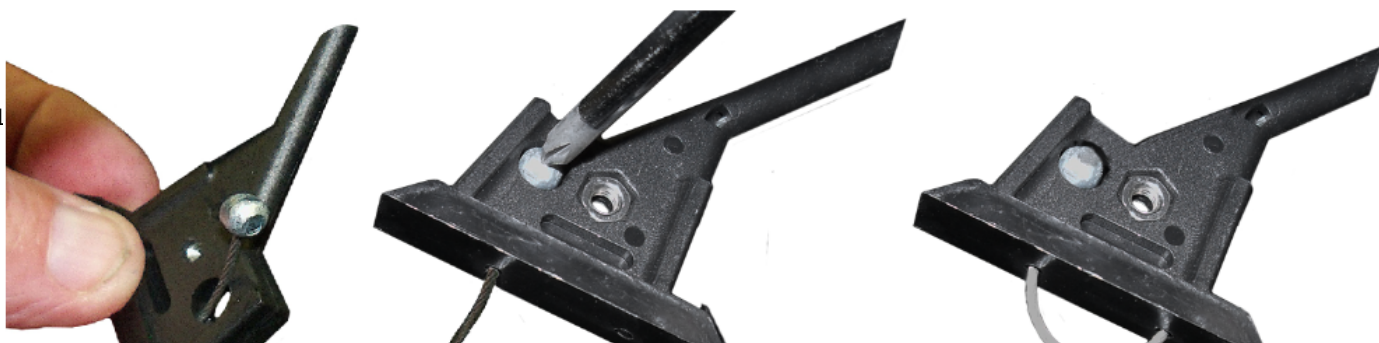
9. Pull the cable all the way out of the handle.



10. Install the handle bar back in place.



11.



12. Insr

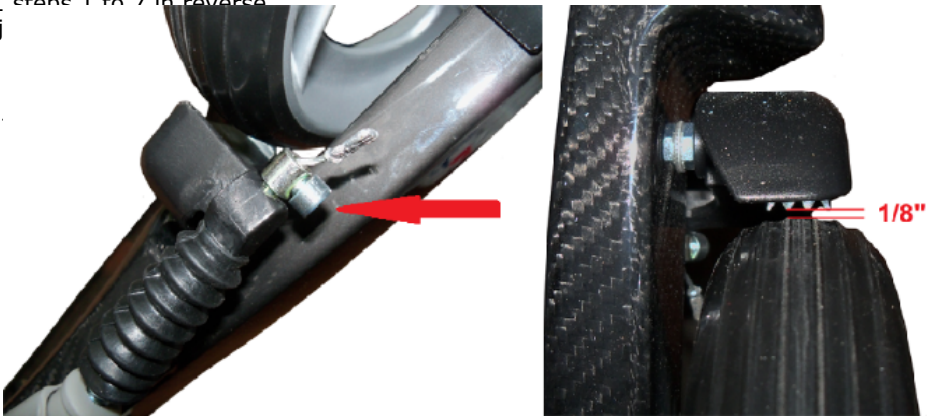


13. Pull the
portion c



14. Follow method 1 steps 1 to 7 in reverse
15. Follow brake adj

1. Loosen the cable



brake fastener.

2. Test the brakes. I
push down on the



clockwise. If they are too loose



[Home](#)