

HOW TO INSTALL AN ADJUSTABLE TENSION BACK ON A WHEELCHAIR

1. Remove the armrests from the chair.



2. Remove the upholstery from the chair. If the chair has an armrest rear guide screwed into the back upholstery, note which screw hole it is installed into.



3. Separate the two half's of the adjustable tension back upholstery. Unfold one side of the adjustable tension back upholstery.



4. Screw the adjustable tension back half unto the back cane of the chair. Repeat for the other side.





5. Fold the adjustable back upholstery around the back post. Align the hook and loop fastener and join together. Repeat for the other side.



6. Thread one of the hook and loop fastener straps through the "D" ring on the opposite side. Repeat for the other straps.

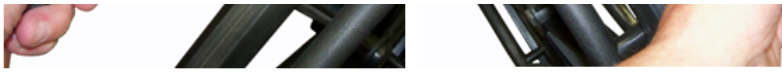


7. If the chair had an armrest rear guide then pull down one side of the adjustable back upholstery and feel along the back for the screw hole that the armrest rear guide was previously installed.



8. Screw one of the armrest guides that was previously removed when the original back was removed. The screw will have to be forced through the adjustable back upholstery. Repeat for the other side. If the armrest has a side to side movement when locked into place, the remove the armrest guide and install with 2 of the 4 washer from the back upholstery hardware between the armrest guide and adjustable tension back.





9. Position the loop and hook fasteners of the cushion of the adjustable tension back and push into place. Position the flap of the cushion and push into place.



[Home](#)