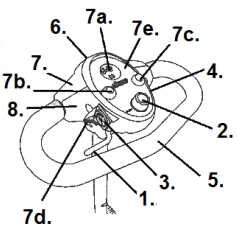
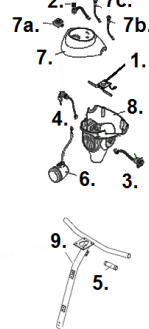
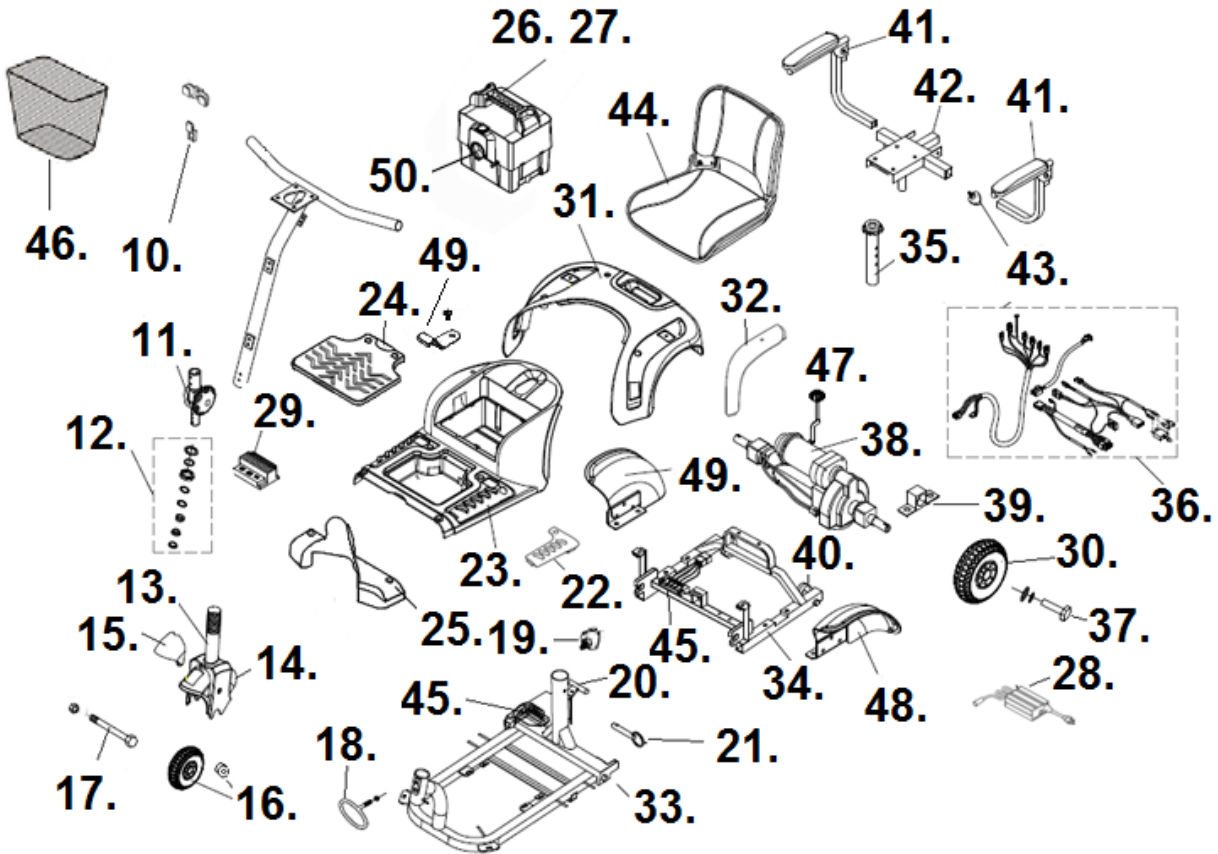


## PHOENIX HD3

Delta Tiller s/n (21)2W1801100007 and later.	Standard tiller before s/n (21)2W1801100007
 <ol style="list-style-type: none"> <li>1. Throttle- S12-069-00300</li> <li>2. Speed Control- S31001</li> <li>3. Charger Port- S31147</li> <li>4. Key Switch- S31006 KEY- S3KEY</li> <li>5. Delta Bar Cover- S35010HD-03 (Upper &amp; Lower Cover)</li> <li>6. Headlight Assembly- S35010HD-02</li> <li>7. Front Tiller Cover- C08-034-01100               <ol style="list-style-type: none"> <li>a. Battery Gauge LED- C11-076-00100</li> <li>b. Headlight Switch- S31122</li> <li>c. Horn Button- S31012</li> <li>d. USB Assembly- S35010HD-01</li> <li>e. Control Panel Assembly- C08-034-01200</li> </ol> </li> <li>8. Rear Tiller Cover Upper- C08-034-01300 Lower- C08-034-01400</li> </ol>	 <ol style="list-style-type: none"> <li>1. Throttle Old- * New- S12-034-00300 <b>* Stock is gone use new style.</b></li> <li>2. Speed Control- S31001</li> <li>3. Charger Port- S31147</li> <li>4. Key Switch- S31006 Key- S3KEY</li> <li>5. Handgrip Foam- S31003 Handgrip TPR Plastic- C20-007-00200</li> <li>6. Headlight Assembly- S31022</li> <li>7. Front Tiller Cover- S31004GT               <ol style="list-style-type: none"> <li>a. Battery Gauge LED- C11-076-00100 LED- C11-076-00100 Analog- C11-033-00101</li> <li>b. Headlight Switch- S31122</li> <li>c. Horn Button- S31012</li> </ol> </li> <li>8. Lower Tiller Cover- S31209BK</li> <li>9. Tiller Standard- S31002 Tiller Ext. Foot Platform- C02-034-00100</li> </ol>



- |  |   |
|--|---|
| 10. Basket Bracket- BC35051  | 32. Rear Shroud Decoration<br>Blue Left- S35011B-L<br>Blue Right- S35011B-R<br>Red Left- S35011R-L<br>Red Right- S35011R-R                |
| 11. Tiller Swivel Assy.- S350109<br>Tiller Adj. Knob- S31028   | 33. Front Frame<br>Non-Ext Foot Platform- NLA<br>Ext Foot Platform- C01-035-00800   |
| 12. Tiller Bearing Assy.- S31021   | 34. Rear Frame<br>Non-Ext Foot Platform- S31130-4HD<br>Ext Foot Platform- C01-035-00900   |
| 13. Fork- S31036-3HD<br>Ext Foot Platform- C03-009-00101   | 35. Seat Post- S31049   |
| 14. Fork Cover- S350127  | 36. Wire Harness- S31048-HD   |
| 15. Blue Decoration- S35012B<br>Red Decoration- S35012R  | 37. Rear Axle Nut- S350112AN  |
| 16. Front Wheel- S31142-3HD<br>Front Wheel Bearing- 9503H79021<br>10mm ID – 22mm OD                                    | 38. Motor/Brake- S31031-HD<br>Transaxle- S350112-HD<br>Motor/Brake/Transaxle- S31125HD<br>Axle Key- 29002W7011                            |
| 17. Front Axle- S05-009-00100  | 39. Transaxle Bracket- S350112BKT-HD  |
| 18. Tow Handle- S31011   | 40. Anti-tip Wheel-S31026   |
| 19. Tension Knob- S350169715   | 41. Armrest Assy. Left- VENT-29<br>Right- VENT-30<br>Armrest Pad Left- VENT-31<br>Right- VENT-32  |
| 20. T Handle Frame lock- S350169716  | 42. Seat Plate- S31039-HD   |
| 21. Seat pin- S350169717   | 43. Armrest- Adj. Knob- S31052  |
| 22. Main Shroud Decoration<br>Blue Left- S3501BL<br>Blue Right- S3501BR<br>Red Left- S3501RL<br>Blue Right- S3501RR    | 44. 17.5" Seat Assembly- S35045-HD<br>17.5" Back Cover- S35045BC-HD<br>17.5" Seat Cover- S35045SC-HD<br>20" Seat & Seat Plate- S35045HD20 |
| 23. Main Shroud- S350110   | 45. Frame Contact Front- S31056HD<br>Rear- S31057HD   |
| 24. Controller Cover- S350113  | 46. Basket- S35003-PL   |
| 25. Foot Shroud- S350114<br>Ext Foot Platform- C08-035-01500   | 47. Free Wheel Knob- S31031K  |
| 26. Battery Pack- S350169707-HD<br>Case Only- S350169706-HD<br>Charger Port- S350169706-HDCP                           | 48. Mud Flap Left- S35048MFL<br>Right- S35048MFR  |
| 27. Battery (2 needed)- LRM412123  | 49. Battery Contact- S31060   |
| 28. Charger- LRM302111   | 50. Battery Box Charge Port- S350169706-HDCP  |
| 29. Controller (CTE)- S31008GT-HD<br>Controller (S-Drive)- C10-067-00200 *<br><b>* After Serial # (21)2W1801100007</b> |   |
| 30. Rear Wheel- S31132B-HD   |   |
| 31. Rear Shroud- S350111<br>Lifting Handle- S35011FH   |   |