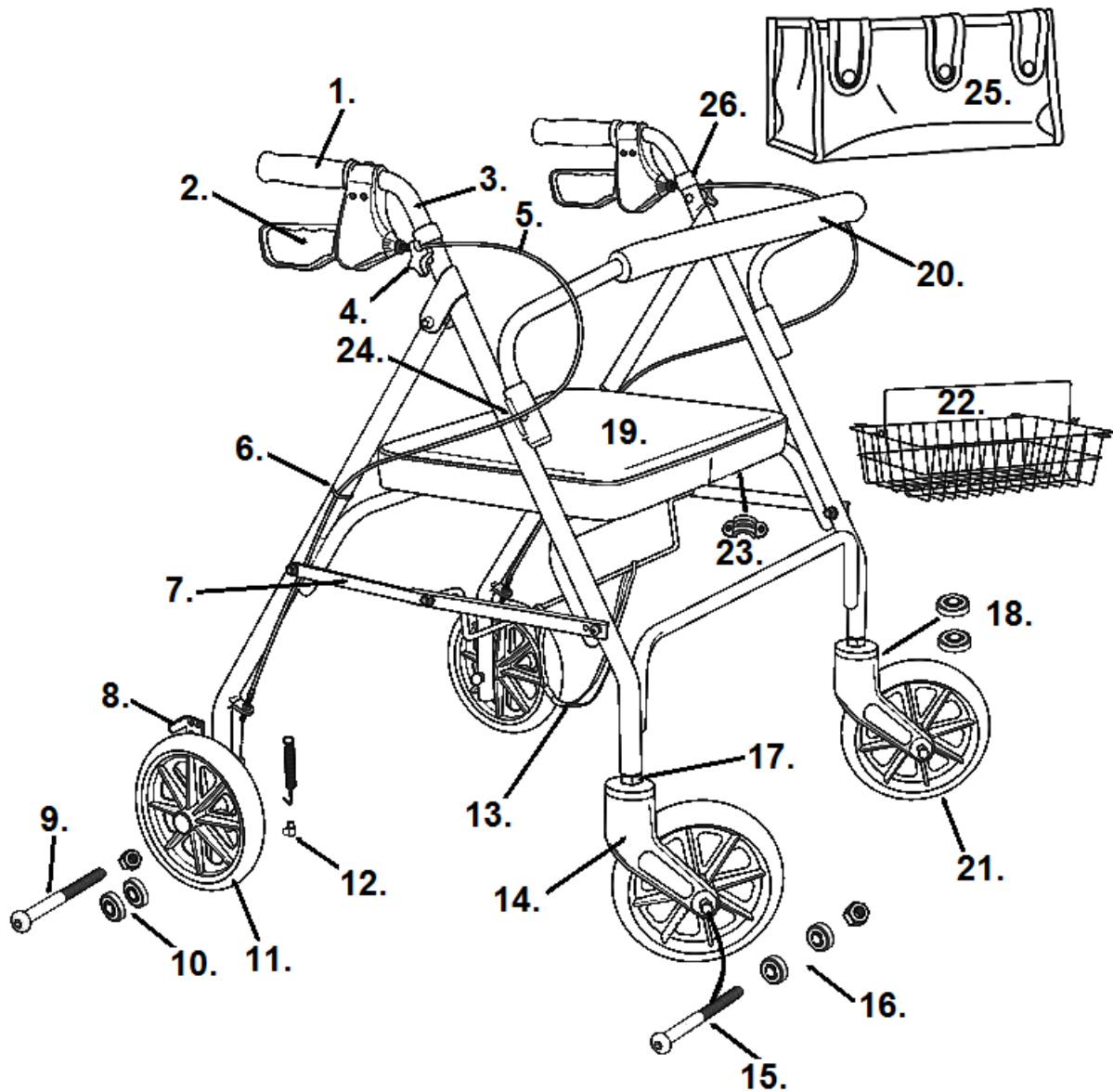


## 10215/10215J



- |  |   |
|--|---|
| 1. Handgrip Plastic- 10208GRPP [1]   | 13. Folding Strap- 951021820000           |
| 2. Hand Brake- 10208BRAKE  | 14. Fork Assembly - 10215F [3]            |
| 3. Handle Bar Set- 9500021507  | 15. Caster Axle- 102105FA                 |
| 4. Height Adjustment Knob- 10208K  | 16. Caster Bearing- STDS1011              |
| 5. Brake Cable Assembly- 920300089901<br>Cable Only- 950000199901                | 17. Fork Fastener 3H Serial #- 9502P21503 |
| 6. Cable Clip- 10208C  | 18. Fork Stem Bearing- STDS1060           |
| 7. Folding Hinge Assembly Black- 95001021501B<br>Folding Hinge Assy. 10215J- [2] | 19. Seat & Brackets- 10215S               |
| 8. Wheel Lock Left- 950000217DL<br>Wheel Lock Right- 950000217ER                 | 20. Backrest- 95108964225B                |
| 9. Rear Wheel Axle- 10215RA  | 21. Caster- 10215W                        |
| 10. Rear Wheel Bearing- STDS002050   | 22. Basket- 10215BSK                      |
| 11. Rear Wheel- 10215RW  | 23. Seat Brackets (3 ea)- 10215SB         |
| 12. Cable Fastener- 9500004101   | 24. Backrest Release Button- 9501A75000   |
|  | 25. Tote- 10216-17                        |
|  | 26. Anti-Rattler- 950300169901            |

[1] When stock is gone the part will no longer be available.

[2] No Longer Available

[3] Includes 2 of part 18.