

Comfort Touch Elevation Wedge

HCPCS:

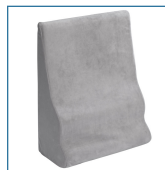
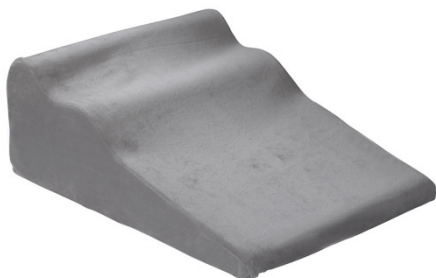


FIGURE A



FIGURE B



FIGURE C

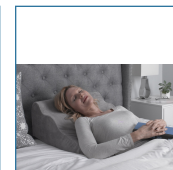


FIGURE D

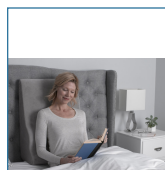


FIGURE E



FIGURE F

- Ergonomically designed wedge, with 1" top layer of memory foam, cradles and conforms to the users head and neck to ease breathing, reduce snoring, and improve comfort
- The 10" inch high elevation is designed to help alleviate the symptoms associated with acid reflux and gastroesophageal reflux disease (GERD)
- Soft velour cover provides luxurious feel for added comfort and is easily removable for cleaning
- Dual purpose wedge can be used upright providing lumbar support for added comfort while sitting up in bed

PRODUCTS

Description

RTL2017CTW	ComfortTouchElevationWedge
------------	----------------------------

SPECIFICATIONS

Description

Cover Material	Urethane Knit Multi-stretch Top, Vinyl Bottom
Dimensions	21" (W) x 26" (L) x 10" (H)
Warranty	1 Year Limited
Weight	4.2 lbs.
Weight Capacity (13046 13046-HD)	350 lbs.