

## Half - Length Bed Rails

HCPCS: E0305



FIGURE A

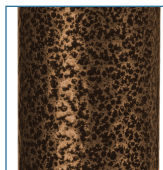


FIGURE B

- Unique design prevents individuals from being lodged between bars
- Ideal for maximum protection when bed is elevated
- Fits most hospital beds with steel frame (Figure A)
- Attractive brown-vein finish is easy-to-maintain and less institutional looking (Figure B)
- Constructed of 1" steel
- Not for use with "Pan-Style" bed surface
- Easy-to-install

### PRODUCTS

#### Description

15201BV	Bed Rail,No-Gap,Half,BrownVein,1/cs
---------	-------------------------------------

### SPECIFICATIONS

#### Description

Warranty	Limited Lifetime
----------	------------------

### ACCESSORIES

#### Description

14198BV	Clamp,15201BV No Gap Rail, 1pr/bx, BX
---------	---------------------------------------