

Half Length Bed Rails

HCPCS: E0305



FIGURE A

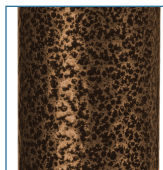


FIGURE B

- Unique design prevents individuals from being lodged between bars
- Ideal for maximum protection when bed is elevated
- Fits most hospital beds with steel frame (Figure A)
- Attractive brown-vein finish is easy-to-maintain and less institutional looking (Figure B)
- Constructed of 1" steel
- Not for use with "Pan-Style" bed surface
- Easy-to-install

PRODUCTS	Description
15201BV	Bed Rail, No-Gap, Half, BV, 1 pair= 1/cs
SPECIFICATIONS	Description
Warranty	Limited Lifetime
ACCESSORIES	Description
14198BV	Clamp,15201BV No Gap Rail, 1/ea, BX
PARTS	Description
15302P1005	CompositeHeadPanels,15302,1/pr/cs, CS
15302P1006	CompositeFootPanel,15302,1/ea, EA
15302P1051	PanelFrame,HeadBoard,15302,1/ea, EA
15302P1052	PanelFrame,FootBoard,15302,1/ea, EA
15309N	HeadFrame,15302,BariatricBed,1/cs, CS
15320N	FootFrame,15302,BariatricBed,1/cs, CS
15350F	Foot Board for 15302,1/cs, CS
15350H	Head Board for 15302,1/cs, CS