

Silver Sport Full-Reclining Wheelchair

HCPCS: K0001 / E1226,K0001+E1226

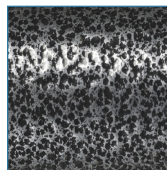


FIGURE A

- Hydraulic reclining mechanism allows for infinite adjustments up to 180°
- Arms have support extension for reclining position
- Nylon upholstery is comfortable, lightweight and easy-to-clean
- Carbon Steel frame with silver vein finish is attractive, and easy-to-maintain (Figure A)
- Composite Mag-style wheels are lightweight and maintenance free
- 8" front casters
- Padded armrests provide added patient comfort
- Wheels set back on frame prevents tipping
- Precision sealed wheel bearings in front and rear ensure long lasting performance and reliability
- Rear anti-tippers standard
- Headrest extension with cushioned head immobilizer standard
- Comes standard with swing-away elevating leg rests
- Metal foot plates
- Comes with push to lock wheel locks

PRODUCTS

Description

| | |
|------------|--------------------------------------------|
| SSP16RBDDA | Silver Sport Full-Reclining Wheelchair, EA |
| SSP16RBDFA | Silver Sport Full-Reclining Wheelchair, EA |
| SSP18RBDDA | Silver Sport Full-Reclining Wheelchair, CS |
| SSP18RBDFA | Silver Sport Full-Reclining Wheelchair, EA |
| SSP20RBDDA | Silver Sport Full-Reclining Wheelchair, EA |
| SSP20RBDFA | Silver Sport Full-Reclining Wheelchair, EA |

SPECIFICATIONS

Description

| | |
|-----------------------------|-------------------------------|
| Back Height | 21" 31" |
| Carton Shipping Weight | 66 lbs. 67 lbs. 67.5 lbs. |
| Height | 50" |
| Length with Riggings | 50" |
| Product Weight with 16 Seat | 59 lbs. |
| Product Weight with 20 Seat | 61 lbs. |
| Product Weight with 18 Seat | 60 lbs. |
| Seat Depth | 16" |
| Seat To Floor Height | 20.5" |
| Seat Width | 16" 18" 20" |
| Warranty | Limited Lifetime |
| Weight Capacity | 300 lbs |

| SPECIFICATIONS | Description |
|---------------------------|-------------------------------------------------------|
| Weight Limit with 16 Seat | 300 lbs. |
| Weight Limit with 18 Seat | 300 lbs. |
| Weight Limit with 20 Seat | 350 lbs. |
| Width Closed | 12" |
| Width Open | 23" 25" 28" |
| Arm Rest Type (s) | Detachable Desk Arm Detachable Full Arm Fixed Arm |
| ACCESSORIES | Description |
| STDS851 | Seat Belt, Velcro Close,1/ea, EA |
| STDS856 | Seat Belt,60"Velcro-type,1/ea, EA |
| STDS850 | Seat Belt, Clasp Type,1/ea, EA |
| STDS855 | Seat Belt,60"" Auto-type,1/ea, EA |
| STDS831 | Heel Loops, 1pr/bx, BX |
| STDS1034 | Wheelchair Cane/Crutch Holder,1/ea, EA |
| STDS806 | Anti-Fold/Theft Device for w/c,1/ea, BX |
| PARTS | Description |
| STDS4Y4712 | Anti Tippers for SSP18RBDDA,1/ea, EA |
| STDS3J2432 | Caster with 8mm Bearings, 1/ea, EA |
| STDS8M481R | Brake Ass'y CS Fixed RGT,1ea, EA |
| STDS3J4533 | Caster Fork,SSPRB, 1/ea, EA |
| STDS3J4511 | BackUphol.Screw&Washer 1/ea, EA |
| STDS1060 | Wheelchair Fork Bearing,1/ea, EA |
| STDS3J2431 | Caster Axle Bolt, Silver Sport 1, 1/ea, EA |
| TRHG | Hand Grips/Universal,1pr/bx, BX |
| STDS3006 | Cable,Back Release,Reclining w/c, 1/ea, EA |
| STDS4Y4729 | Rear Wheel Bearing, SSPRB, CX4, 2ea/pk, PKG |
| STDS4Y4702R | ReleaseHndle w/Cable,SSP18RBDDA,RHT,1/ea, EA |
| STDS4Y4702L | ReleaseHndle w/Cable,SSP18RBDDA,LFT,1/ea, EA |
| STDS4Y4715 | Anti Folding ADJ Knob,SSP18RBDDA,1/ea, EA |
| STDS4Y4798 | Frnt/RearSlideTubeW/Bushing,16/18SSPRec, EA |
| STDS4Y4726 | Headrest Pillow,SSP RCL,1ea, EA |
| STDS4Y4724 | HeadrstAssmW/Posts&Upholstery,SSP16RBDDA, EA |
| STDS4Y4713 | HeadrstAssmW/Posts&Upholstery,SSP18RBDDA, EA |
| STDS4Y4725 | HeadrstAssmW/Posts&Upholstery,SSP20RBDDA, EA |
| STDS4Y4700 | BackUphol.all compnts,SSP18RBDDA,1/ea, EA |
| STDS4Y4722 | Back Upholstery 16",SSP Recliner,1/ea, EA |