

Silver Sport Full-Reclining Wheelchair

HCPCS: K0001 / E1226,K0001+E1226

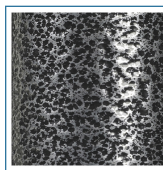


FIGURE A

- Hydraulic reclining mechanism allows for infinite adjustments up to 180°
- Arms have support extension for reclining position
- Nylon upholstery is comfortable, lightweight and easy-to-clean
- Carbon Steel frame with silver vein finish is attractive, and easy-to-maintain (Figure A)
- Composite Mag-style wheels are lightweight and maintenance free
- 8" front casters
- Padded armrests provide added patient comfort
- Wheels set back on frame prevents tipping
- Precision sealed wheel bearings in front and rear ensure long lasting performance and reliability
- Rear anti-tippers standard
- Headrest extension with cushioned head immobilizer standard
- Comes standard with swing-away elevating leg rests
- Metal foot plates
- Comes with push to lock wheel locks

PRODUCTS

Description

SSP16RBDDA	SilverSport16"ReclBackDetachDesk, 1/ea
SSP18RBDDA	SilverSport18"ReclBackDetDesk,1/cs
SSP18RBDFA	Silver Sport 18"Recl Back,Full Arm,1/ea
SSP20RBDDA	SilverSport20"ReclBackDetachDesk, 1/ea

SPECIFICATIONS

Description

Back Height	21" 31"
Carton Shipping Weight	66 lbs 67 lbs 67.5 lbs
Height	50"
Length with Riggings	50"
Product Weight with 16 Seat	59 lbs
Product Weight with 20 Seat	61 lbs
Product Weight with 18 Seat	60 lbs
Seat Depth	16"
Seat To Floor Height	20.5"
Warranty	Limited Lifetime
Weight Limit with 16 Seat	300 lbs
Weight Limit with 18 Seat	300 lbs
Weight Limit with 20 Seat	350 lbs
Width Closed	12"

SPECIFICATIONS	Description
Width Open	23" 25" 28"
Arm Rest Type (s)	Detachable Desk Arm Detachable Full Arm Fixed Arm
ACCESSORIES	Description
STDS851	Seat Belt, Velcro Close,1/ea, EA
STDS856	Seat Belt,60"Velcro-type,1/ea, EA
STDS850	Seat Belt, Clasp Type,1/ea, EA
STDS855	Seat Belt,60" Auto-type,1/ea, EA
STDS831	Heel Loops, 1pr, BX
STDS1034	Wheelchair Cane/Crutch Holder,1/ea, EA
STDS4Y4712	Anti Tippers for SSP18RBDDA,1/ea, EA
STDS806	Anti-Fold/Theft Device for w/c,1/ea, BX
PARTS	Description
STDS3J2432	Caster with 8mm Bearings, 1/ea, EA
STDS8M481R	Brake Ass'y CS Fixed RGT,1ea, EA
STDS3J4533	Caster Fork,SSPRB, 1/ea, EA
STDS3J4511	BackUphol.Screw&Washer 1/ea, EA
STDS1060	Wheelchair Fork Bearing,1/ea, EA
STDS3J2431	Caster Axle Bolt, Silver Sport 1, 1/ea, EA
TRHG	Hand Grips/Universal,1pr/bx, BX
STDS3006	Cable,Back Release,Reclining w/c, 1/ea, EA
STDS4Y4729	Rear Wheel Bearing, SSPRB, CX4, 2ea/pk, PK
STDS4Y4702R	ReleaseHndle w/Cable,SSP18RBDDA,RHT,1/ea, EA
STDS4Y4702L	ReleaseHndle w/Cable,SSP18RBDDA,LFT,1/ea, EA
STDS4Y4715	Anti Folding ADJ Knob,SSP18RBDDA,1/ea, EA
STDS4Y4798	Frnt/RearSlidingTubew/Bushing,16/18 SSP, EA
STDS4Y4726	Headrest Pillow,SSP RCL,1ea, EA
STDS4Y4724	HeadrstAssmW/Posts&Upholstery,SSP16RBDDA, EA
STDS4Y4713	HeadrstAssmW/Posts&Upholstery,SSP18RBDDA, EA
STDS4Y4725	HeadrstAssmW/Posts&Upholstery,SSP20RBDDA, EA
STDS4Y4700	BackUphol,all compnts,SSP18RBDDA,1/ea, EA
STDS4Y4722	Back Upholstery 16",SSP Recliner,1/ea, EA
STDS4Y4718	Back Uphol,SSP 20" Recliner,1/ea, EA