

## Silver Sport 2 Wheelchair

HCPCS: K0001 / K0002-1, K0001 OR K0002

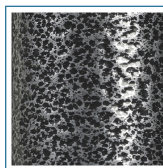


FIGURE A

- Powder-coated silver vein steel frame (Figure A)
- Embossed vinyl upholstery is durable, lightweight, attractive and easy-to-clean
- Urethane tires mounted on composite wheels provide durability and low maintenance
- 8" front casters, adjustable in three positions
- Padded armrests provide additional comfort
- Carry pocket on backrest provides additional convenience
- Comes with swing-away footrests or elevating leg rests with tool-free adjustable length riggings
- Plastic foot plates with heel loops on footrests
- Comes with push-to-lock wheel locks

### PRODUCTS

### Description

|               |  |
|---------------|--|
| SSP216DDA-ELR | SlvrSprt2,16"SlvrVeinDetDsk,ElvLg,1/cs   |
| SSP216DDA-SF  | -lveSprt2,16in SlvrVeinDetDsk,SwgFt,1/cs |
| SSP216DFA-ELR | SlvrSprt2,16"SlvrVeinDetFullArm,ELV,1/ea |
| SSP216DFA-SF  | SlvrSprt2,16",DetFullArm,SwgFt,1/ea      |
| SSP218DDA-ELR | SlvrSprt2,18"SlvrVeinDetDskArm,ElvLg1/cs |
| SSP218DDA-SF  | SlvrSprt2,18inSvrVeinDetDsk,SwgFt,1/cs   |
| SSP218DFA-ELR | SlvrSprt2,18"SlvrVeinDetFullArm,ELV,1/cs |
| SSP218DFA-SF  | SlvrSprt2,18",DetFullArm,SwgFt,1/ea      |
| SSP218FA-ELR  | SlvrSprt2,18"SlvrVeinFxdArm,ElvLg,1/cs   |
| SSP218FA-SF   | SlvrSprt2 18 SlvrVeinFxdArm.SwgFt,1/cs   |
| SSP220DDA-ELR | SlvrSprt2,20""SlvrVeinDetDsk,ElvLg,1/cs  |
| SSP220DDA-SF  | SlvrSprt2,20in SlvrVeinDetDsk,SwgFt,1/c  |
| SSP220DFA-ELR | SlvrSprt2,20"SlvrVein,FullAmr,ElvLg,1/ea |
| SSP220DFA-SF  | SlvrSprt2,20",DetFullArm,SwgFt,1/ea      |

### SPECIFICATIONS

### Description

|                             |                          |
|-----------------------------|--------------------------|
| Back Height                 | 16"                      |
| Carton Shipping Weight      | 48 lbs   49 lbs   50 lbs |
| Height                      | 36"                      |
| Length with Riggings        | 42"                      |
| Product Weight with 16 Seat | 40 lbs                   |
| Product Weight with 20 Seat | 42 lbs                   |
| Product Weight with 18 Seat | 41 lbs                   |
| Seat Depth                  | 16"                      |

| SPECIFICATIONS            | Description                                  |
|---------------------------|--|
| Seat To Floor Height      | 17.5" - 19.5"                                |
| Warranty                  | Limited 3 Years                              |
| Weight Limit with 16 Seat | 250 lbs                                      |
| Weight Limit with 18 Seat | 300 lbs                                      |
| Weight Limit with 20 Seat | 350 lbs                                      |
| Width Closed              | 12.5"  |
| Width Open                | 24"   26"   28"                              |
| ACCESSORIES               | Description                                  |
| STDSSSP-AA                | Amputee Adapter Kit, SSP, 1/set, EA          |
| STDS831                   | Heel Loops, 1pr, BX                          |
| STDS1034                  | Wheelchair Cane/Crutch Holder,1/ea, EA       |
| WASR                      | Limb Support, Right,1/cs, CS                 |
| WASL                      | Limb Support,Left,1/cs, CS                   |
| STDS801GT                 | WheelLockExtension,ViperGT,SSP2,1/ea, EA     |
| STDS806                   | Anti-Fold/Theft Device for w/c,1/ea, BX      |
| STDS820                   | Telescoping IV Pole,W/C, 1/bx, BX            |
| STDS851                   | Seat Belt, Velcro Close,1/ea, EA             |
| STDS855                   | Seat Belt,60"" Auto-type,1/ea, EA            |
| STDS856                   | Seat Belt,60"Velcro-type,1/ea, EA            |
| STDS850                   | Seat Belt, Clasp Type,1/ea, EA               |
| STDS818                   | Anti-Tippers,rear,SentraRecliner,1pr/bx, BX  |
| STDS833N                  | Rear Anti Tipper w.wheels SSP&CS,1/pr, PR    |
| STDSSSP2-PL               | Pull-To-Lock Brake, SSP2, Left, 1/ea, EA     |
| STDSSSP2-PR               | Pull-To-Lock Brake, SSP2, Right, 1/ea, EA    |
| STDS803                   | Oxygn Tank Holdr for W/C,1/cs, CS            |
| PARTS                     | Description                                  |
| STDS8M462L                | BrakeAsm.DetachableArmLt,SS2,1/ea, EA        |
| STDS8M462R                | BrakeAsm.DetachableArmRT,SS2,1/ea, EA        |
| STDS3J4601                | Slide Tube w/bushing, SSP,1/ea, EA           |
| STDS002601                | Bushing for SlideTube,Sen.EC,1/ea, EA        |
| STDS1070                  | Seat Rail Guide, Removable Arm, 1/ea, EA     |
| STDS3J4503                | Arm Release Button,SlvrSprt.1/ea, EA         |
| STDS8M4651                | ForkStemCap,SS2,BS,Cruiser,1/ea, EA          |
| STDS004602                | Seat Rail Guide, Fixed Arm, 1/ea, EA         |
| STDS3J4625                | RearAxleBoltFixArmChair.SS2,1/ea, EA         |
| STDS8M4601                | ForkStemBearing,SSP2,Cruiser,1/ea, EA        |
| STDS3J2431                | Caster Axle Bolt, Silver Sport 1, 1/ea, EA   |
| STDS3J2432                | Caster with 8mm Bearings, 1/ea, EA           |
| STDS3J2421                | HubCap,RearWheel,Cruiser3,SSP,BS,1/ea, EA    |
| STDS001000                | Axle Cap 8mm, 1ea, EA                        |
| STDS3J2410R               | Footplate&HeelLoop,Right,Cruiser,SSP,CS, EA  |
| STDS3J2400                | Handrim,Cruiser3,1/ea, EA                    |
| STDS3J24SF                | Footrest Set,Cruiser3,SSP, 1pr/set, EA       |
| STDS3J2424                | Wheel24in Blk.Handrl,Cruiser3,SSP,BS,1/e, EA |
| LK3JELR                   | ELR Set,Black,1Pair eq EA, PR                |
| STDSDSKVB                 | UniversalWheelChairVinylDeskArmPad,1/ea, EA  |