

Silver Sport 2 Wheelchair

HCPCS: K0001 / K0002-1, K0001/K0002+E2201

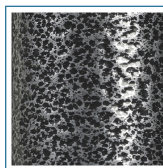


FIGURE A

- Powder-coated silver vein steel frame (Figure A)
- Embossed vinyl upholstery is durable, lightweight, attractive and easy-to-clean
- Urethane tires mounted on composite wheels provide durability and low maintenance
- 8" front casters, adjustable in three positions
- Padded armrests provide additional comfort
- Carry pocket on backrest provides additional convenience
- Comes with swing-away footrests or elevating leg rests with tool-free adjustable length riggings
- Plastic foot plates with heel loops on footrests
- Comes with push-to-lock wheel locks

PRODUCTS

Description

SSP216DDA-ELR	SlvrSprt2,16"SlvrVeinDetDsk,ElvLg,1/cs
SSP216DDA-SF	-lveSprt2,16in SlvrVeinDetDsk,SwgFt,1/cs
SSP216DFA-ELR	SlvrSprt2,16"SlvrVeinDetFullArm,ELV,1/ea
SSP216DFA-SF	SlvrSprt2,16",DetFullArm,SwgFt,1/ea
SSP218DDA-ELR	SlvrSprt2,18"SlvrVeinDetDskArm,ElvLg1/cs
SSP218DDA-SF	SlvrSprt2,18inSvrVeinDetDsk,SwgFt,1/cs
SSP218DFA-ELR	SlvrSprt2,18"SlvrVeinDetFullArm,ELV,1/cs
SSP218DFA-SF	SlvrSprt2,18",DetFullArm,SwgFt,1/ea
SSP218FA-ELR	SlvrSprt2,18"SlvrVeinFxdArm,ElvLg,1/cs
SSP218FA-SF	SlvrSprt2 18 SlvrVeinFxdArm.SwgFt,1/cs
SSP220DDA-ELR	SlvrSprt2,20""SlvrVeinDetDsk,ElvLg,1/cs
SSP220DDA-SF	SlvrSprt2,20in SlvrVeinDetDsk,SwgFt,1/c
SSP220DFA-ELR	SlvrSprt2,20"SlvrVein,FullAmr,ElvLg,1/ea
SSP220DFA-SF	SlvrSprt2,20",DetFullArm,SwgFt,1/ea

SPECIFICATIONS

Description

Back Height	16"
Carton Shipping Weight	48 lbs 49 lbs 50 lbs
Height	36"
Length with Riggings	42"
Product Weight with 16 Seat	40 lbs
Product Weight with 20 Seat	42 lbs
Product Weight with 18 Seat	41 lbs
Seat Depth	16"

SPECIFICATIONS	Description
Seat To Floor Height	17.5" - 19.5"
Warranty	Limited 3 Years
Weight Limit with 16 Seat	250 lbs
Weight Limit with 18 Seat	300 lbs
Weight Limit with 20 Seat	350 lbs
Width Closed	12.5"
Width Open	24" 26" 28"
ACCESSORIES	Description
STDSSSP-AA	Amputee Adapter Kit, SSP, 1/set, EA
STDS831	Heel Loops, 1pr, BX
STDS1034	Wheelchair Cane/Crutch Holder,1/ea, EA
WASR	Limb Support, Right,1/cs, CS
WASL	Limb Support,Left,1/cs, CS
STDS801GT	WheelLockExtension,ViperGT,SSP2,1/ea, EA
STDS806	Anti-Fold/Theft Device for w/c,1/ea, BX
STDS820	Telescoping IV Pole,W/C, 1/bx, BX
STDS851	Seat Belt, Velcro Close,1/ea, EA
STDS855	Seat Belt,60"" Auto-type,1/ea, EA
STDS856	Seat Belt,60"Velcro-type,1/ea, EA
STDS850	Seat Belt, Clasp Type,1/ea, EA
STDS818	Anti-Tippers,rear,SentraRecliner,1pr/bx, BX
STDS833N	Rear Anti Tipper w.wheels SSP&CS,1/pr, PR
STDSSSP2-PL	Pull-To-Lock Brake, SSP2, Left, 1/ea, EA
STDSSSP2-PR	Pull-To-Lock Brake, SSP2, Right, 1/ea, EA
STDS803	Oxygn Tank Holdr for W/C,1/cs, CS
PARTS	Description
STDS8M462L	BrakeAsm.DetachableArmLt,SS2,1/ea, EA
STDS8M462R	BrakeAsm.DetachableArmRT,SS2,1/ea, EA
STDS3J4601	Slide Tube w/bushing, SSP,1/ea, EA
STDS002601	Bushing for SlideTube,Sen.EC,1/ea, EA
STDS1070	Seat Rail Guide, Removable Arm, 1/ea, EA
STDS3J4503	Arm Release Button,SlvrSprt.1/ea, EA
STDS8M4651	ForkStemCap,SS2,BS,Cruiser,1/ea, EA
STDS004602	Seat Rail Guide, Fixed Arm, 1/ea, EA
STDS3J4625	RearAxleBoltFixArmChair.SS2,1/ea, EA
STDS8M4601	ForkStemBearing,SSP2,Cruiser,1/ea, EA
STDS3J2431	Caster Axle Bolt, Silver Sport 1, 1/ea, EA
STDS3J2432	Caster with 8mm Bearings, 1/ea, EA
STDS3J2421	HubCap,RearWheel,Cruiser3,SSP,BS,1/ea, EA
STDS001000	Axle Cap 8mm, 1ea, EA
STDS3J2410R	Footplate&HeelLoop,Right,Cruiser,SSP,CS, EA
STDS3J2400	Handrim,Cruiser3,1/ea, EA
STDS3J24SF	Footrest Set,Cruiser3,SSP, 1pr/set, EA
STDS3J2424	Wheel24in Blk.Handrl,Cruiser3,SSP,BS,1/e, EA
LK3JELR	ELR Set,Black,1Pair eq EA, PR
STDSDSKVB	UniversalWheelChairVinylDeskArmPad,1/ea, EA