

## Silver Sport VI Heavy Duty Wheelchair



HCPCS:

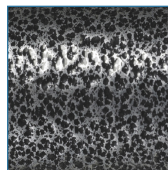


FIGURE A



FIGURE B

- Powder-coated reinforced steel frame with silver vein finish (Figure A)
- Embossed vinyl upholstery is durable, lightweight, and easy-to-clean
- Durable urethane tires on composite wheels are low maintenance
- Padded armrests are detachable, and available in desk or full length
- Comes with swing-away footrests or elevating legrests with tool-free adjustable length riggings
- Push-to-lock wheel locks

PRODUCTS	Description
SSP618DDA-SF	Silver Sport VI,18" DetDskArm,SwgFt,1/
SSP618DFA-SF	Silver Sport VI,18" DetFlArm,SwgFt,1/
SSP620DFA-SF	Silver Sport VI,20" DetFlArm,SwgFt,1/

SPECIFICATIONS	Description
Back Height	16"
Carton Shipping Weight	49 lbs.   50 lbs.
Height	36"
Length	42"
Length with Riggings	42"
Product Weight without Riggings 18 , 20	36 lbs.   37 lbs.
Seat Depth	16"
Seat To Floor Height	17.5" - 19.5"
Seat Width	18"   20"
Warranty	Limited Lifetime on Frame
Weight Capacity	300 lbs
Width Closed	12.5"
Width Open	26"   28"
Arm Rest Type (s)	Detachable Desk Arm   Detachable Full Arm

ACCESSORIES	Description
STDS801GT	WheelLockExtension,ViperGT,SSP2,1/ea, EA
STDS806	Anti-Fold/Theft Device for w/c,1/ea, BX
WASR	Limb Support, Right,1/cs, CS
WASL	Limb Support,Left,1/cs, CS
STDS833N	Rear Anti Tipper w.wheels SSP&CS,1/pr, PR
STDS850	Seat Belt, Clasp Type,1/ea, EA
STDS818	Anti-Tippers,rear,SentraRecliner,1pr/bx, BX

**ACCESSORIES****Description**

STDS856	Seat Belt,60"Velcro-type,1/ea, EA
STDS855	Seat Belt,60" Auto-type,1/ea, EA
STDS851	Seat Belt, Velcro Close,1/ea, EA
STDS SSP-AA	Amputee Adapter Kit, SSP, 1/set, EA

**PARTS****Description**

WB 8036	Hand Grip, 1/ea, EA
STDS3J4608	Back Uphol.18"SlvrSprt.II,1/ea, EA
STDS3J4602	Back Uphol.20"SlvrSprt.II,1/ea, EA
STDS3J4618	Seat Uphol.18"SlvrSprt.1/ea, EA
STDS3J4620	Seat Uphol.20"SlvrSprt.II,1/ea, EA
STDS8M4603	BrakeTipSleeve,Cruiser,SSP, 1/ea, EA
STDS3J2424	Wheel24in Blk.Handrl,Cruiser3,SSP,BS,1/e, EA
STDS3J2400	Handrim,Cruiser3,1/ea, EA
STDS004609-9	Hand Rim Screw Set of 9,1Bag, BAG
STDS3J2413	Rear Axle Bearing,Cruiser3,1/ea, EA
STDS3J4626	Rear Axle Bolt W/Nut, SSP2 Det. Arms,1e, EA
STDS3J2421	HubCap,RearWheel,Cruiser3,SSP,BS,1/ea, EA
STDS8M462L	BrakeAsm.DetachableArmLt,SS2,1/ea, EA
STDS8M462R	BrakeAsm.DetachableArmRT,SS2,1/ea, EA
STDS4S2432	Caster with 11mm Bearings, 1/ea, EA
STDS8M4633	Fork, SSP2,1/ea, EA
STDS3J24SF	Footrest Set,Cruiser3,SSP, 1pr/set, EA
LK3JELR	ELR Set,Black,1Pair eq EA, PR
STDS3J46L1	Side Frame Detachable Arm,Left,SS2,1/ea, EA
STDS3J46R1	SideFrameDetachableArm,Right,SS2,1/ea, EA