

## Hip-High Chair

HCPCS:

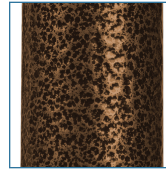


FIGURE A

- Designed for post-hip surgery residents
- Attractive, durable brown-vein finish is easy-to-maintain and less institutional looking (Figure A)
- Contoured armrests are comfortable and durable
- Attractive vinyl seat and backrest are soft, washable, comfortable and water resistant

PRODUCTS	Description
17100-BV	Hip Chair, Brown Vein, 1/cs

SPECIFICATIONS	Description
Carton Shipping Weight	47 lbs.
Floor to Arm Height	32"
Floor to Footrest Height (adjustable)	6"
Floor to Seat Height	26"
Overall Dimensions	22" (W) x 40.75" (H) x 29" (D)
Warranty	1 Year on Upholstery, Limited Lifetime Warranty on Frame
Weight	37 lbs.
Weight Capacity	300 lbs
Width Between Arms	17.5"