

Dual Oxygen Cart

HCPCS:

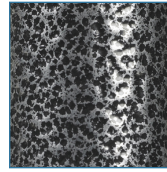


FIGURE A



- Lightweight silver vein cart can accommodate two "D" or "E" size cylinders
- Handle is adjustable to accommodate most individuals
- Silver vein finish easy-to-maintain & less institutional looking (Figure A)
- Large, composite wheels allow for easy, safe maneuvering

PRODUCTS	Description
13001SV-2	Oxygen CylinderCart,Dual,Silver,2/cs
SPECIFICATIONS	Description
Carton Shipping Weight	22 lbs.
Height	12.2"
Length	38.6"-41.9"
Overall Wheelbase	14.5" (W)
Warranty	Limited Lifetime
Weight	5.4 lbs.
Weight Capacity	80 lbs
Width	14.6"