

Foot Stool with Handrail

HCPCS:

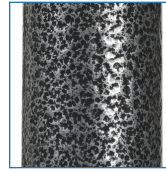


FIGURE A



- Handrail provides additional support and safety
- Steel-welded construction
- Silver vein finish easy-to-maintain and less institutional looking! (Figure A)
- Non-skid ribbed rubber platform
- Reinforced rubber tips

PRODUCTS	Description
13031-1SV	Foot Stool,Dlx w/Hnd Rl.SilverVein,1/c
SPECIFICATIONS	Description
Carton Shipping Weight	10 20 lbs.
Handle Height	34"
Overall Dimensions	14" (W) x 13" (D)
Step Height	9.5"
Step Surface	14" (W) x 11" (D)
Warranty	Limited Lifetime
Weight	8 16 lbs.
Weight Capacity	300 lbs